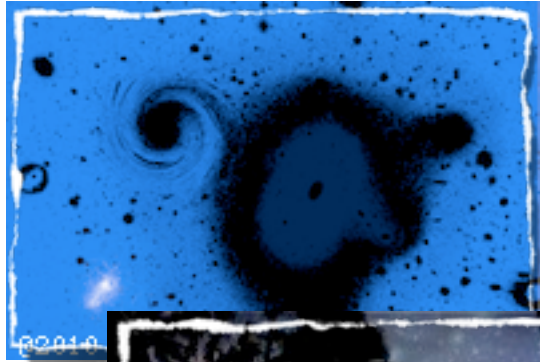


# Why are we here?



**Question:** Does dark matter on small scales behave as is predicted by the CDM (plus baryonic physics) hierarchical galaxy-formation model?

**Clues:** CDM substructure, Dwarf satellites, Relics/Streams, Reionization, DM studies/detections, Dynamics, Gravitational Lensing, Stellar Populations/Chemical Evolution, etc.

## Conference:

First Light and Faintest Dwarfs: Clues to the Small Scale Structure of Cold Dark Matter

## Program:

First Galaxies and Faint Dwarfs: Clues to the Small Scale Structure of Cold Dark Matter

---

Coordinators: Leon Koopmans, Nick Gnedin, Risa Wechsler

Advisors: Tom Abel, James Bullock, Marla Geha, Julio Navarro, Laura Sales, Simona Vegetti