

KITP 2012: FIRST LIGHT AND FAINTEST DWARFS



PIERO MADAU
UC SANTA CRUZ



Mobile

NEWS SCIENCE & ENVIRONMENT

16 September 2011 Last updated at 13:47 ET

Dwarf galaxies suggest dark matter theory may be wrong

By Leila Battison
Science reporter, Bradford

Home | US & Canada | Latin America | UK | Africa | Asia | Europe | Mid-East | Business | Health | Sci/Environ





SPACE

Do Invisible Galaxies Swirl Around the Milky Way?

By MICHAEL D. LEMONICK Thursday, Jan. 19, 2012

Related Photos



The Best Photos from Space of 2011



NASA / MCT / Getty Images

HAPPENING LIVE AT 5:30pm ET VISIT NOW



...s May Nix Theory of Dark Matter in



16 September 2011 Last
**Dwarf gal
may be w**
By Leila Battiso
Reporter, Br
Science News

Do Dwarf Galax

ScienceDaily (Apr. 2, 2008) — A detailed an of eight dwarf galaxies that orbit the Milky We indicates that their orbital behaviour can be explained more accurately with Modified Newtonian Dynamics (MOND) than by the riv more widely accepted, theory of dark matter. T results will be presented by Garry Angus, of th University of St Andrews, at the RAS National Astronomy Meeting in Belfast on the 2nd of April.

See Also: "MOND was first suggested to account for this

- Space & Time
- Galaxies
- Astrophysics
- Stars
- Dark Matter

The Hubble Searches for the First Light

By BROWARD LISTON Wednesday, May 01, 2002



Winner of the 2011 National Magazine Award for General Excellence

Search ScientificAmerican.co

Home » Multimedia » Podcasts » Science Talk »
News & Features » Blogs » Multimedia » Education » Citizen Science »



Science Talk | Astrophysics

What's The Matter?: Cold Dark Matter and the Milky Way's Missing Satellites

Tweet 0

Like

CBS NEWS
TECH

VIDEO U.S. WORLD POLITICS ENTERTAINMENT HEALTHWATCH MONEYWA

Blogs: Political Hotsheet Crisesider Investigates HealthPop Celebrity Circuit Tech Talk More

GALLERY
SAG Awards red carpet 2012
4 of 9

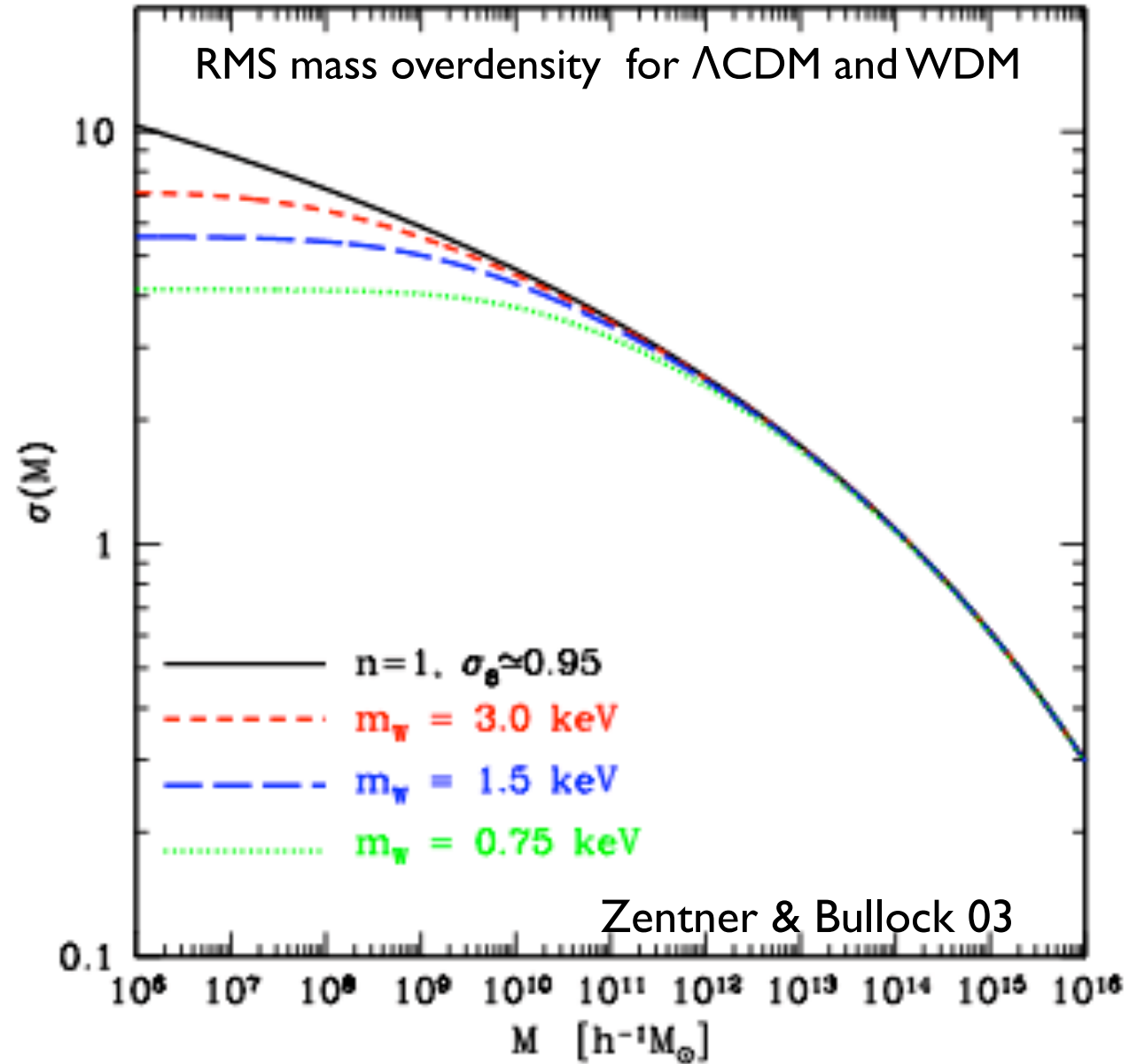
CBS EVENING N
Arson may have led to deadly Fla. car crashes
5 of

January 18, 2012 2:56 PM

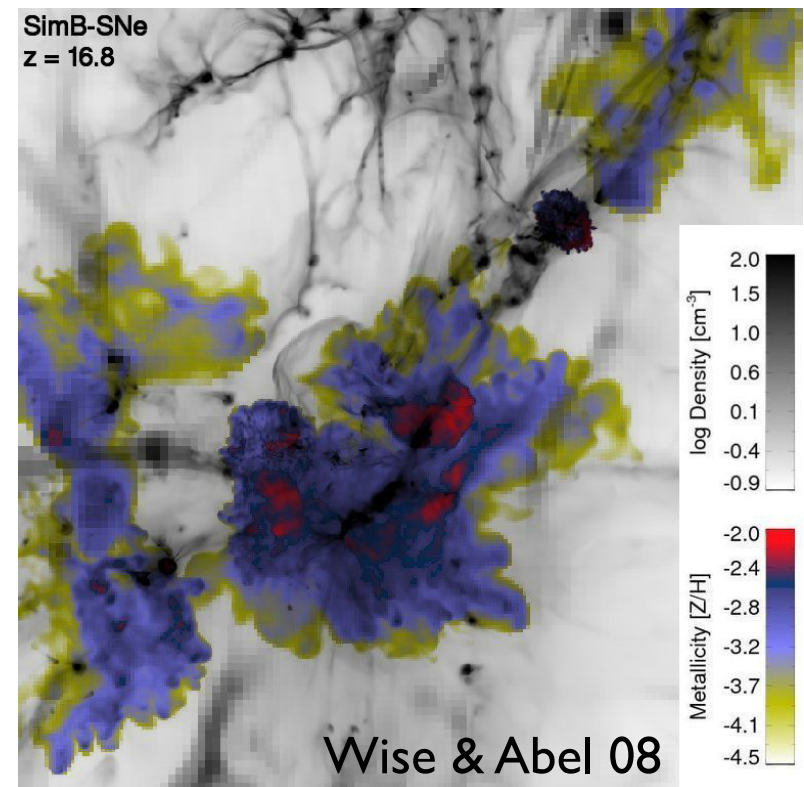
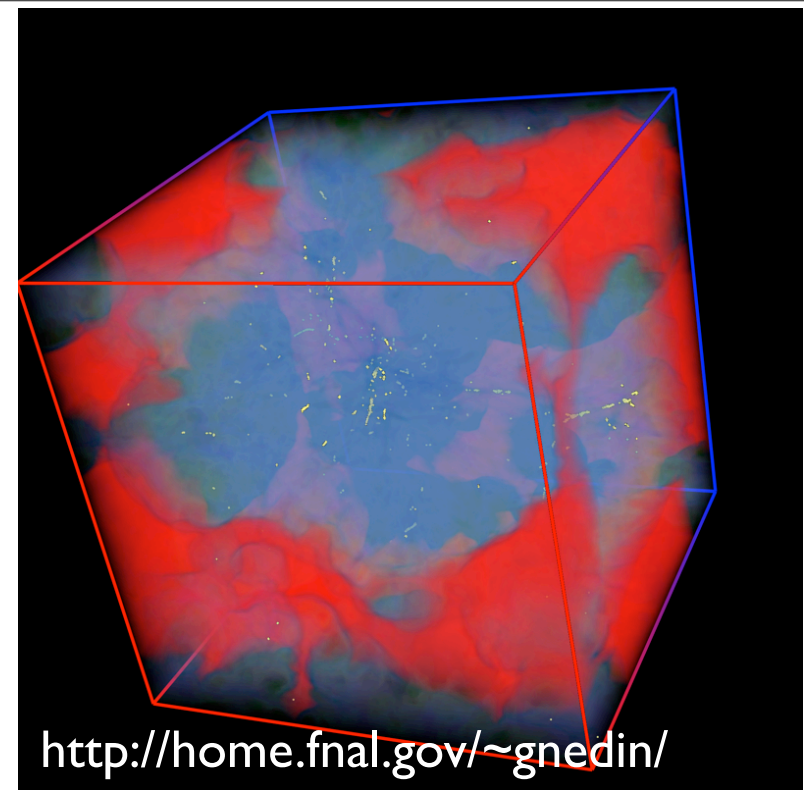
PRINT TEXT

Invisible galaxy said likely made of dark matter

- DGs are DM laboratories: probe the power spectrum on small scales and offer a unique test of the particle nature of dark matter.



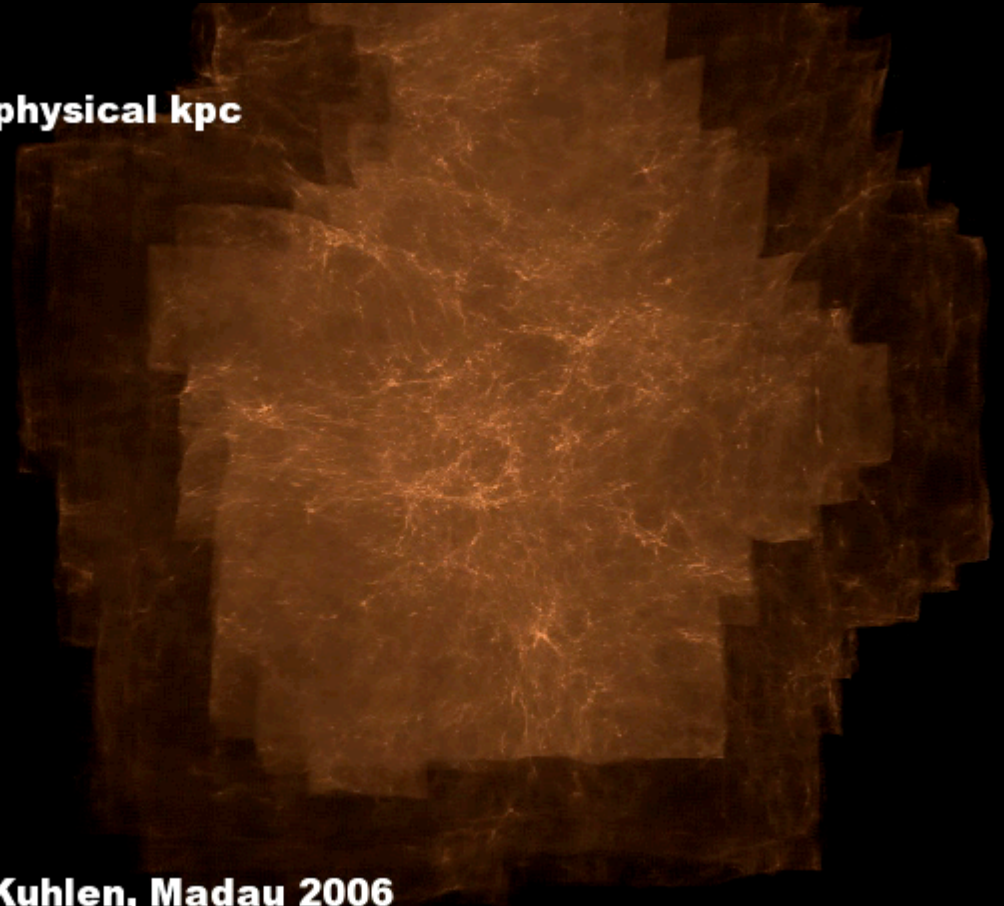
- DGs probe of the epoch of first light: first generation of cosmic structures to go nonlinear \Rightarrow responsible for the reionization and chemical enrichment of the universe.



$z=11.9$

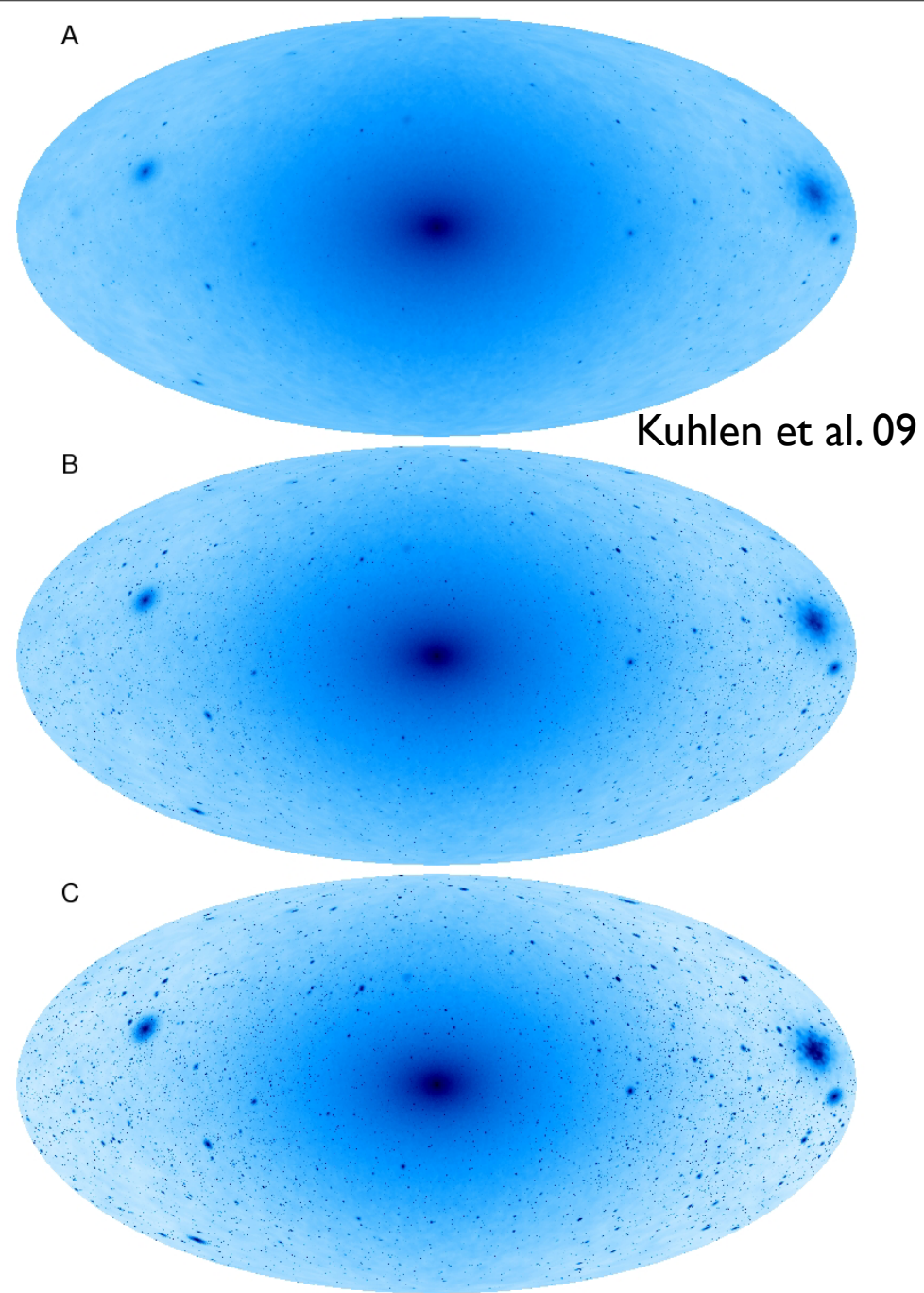
800 x 600 physical kpc

- DGs are the building blocks of more massive galaxies: their remnants provide a powerful test of the hierarchical assembly of cosmic structures.



Diemand, Kuhlen, Madau 2006

- Surviving DG satellites in the halo of the MW provide an excellent laboratory for indirect detection of DM.



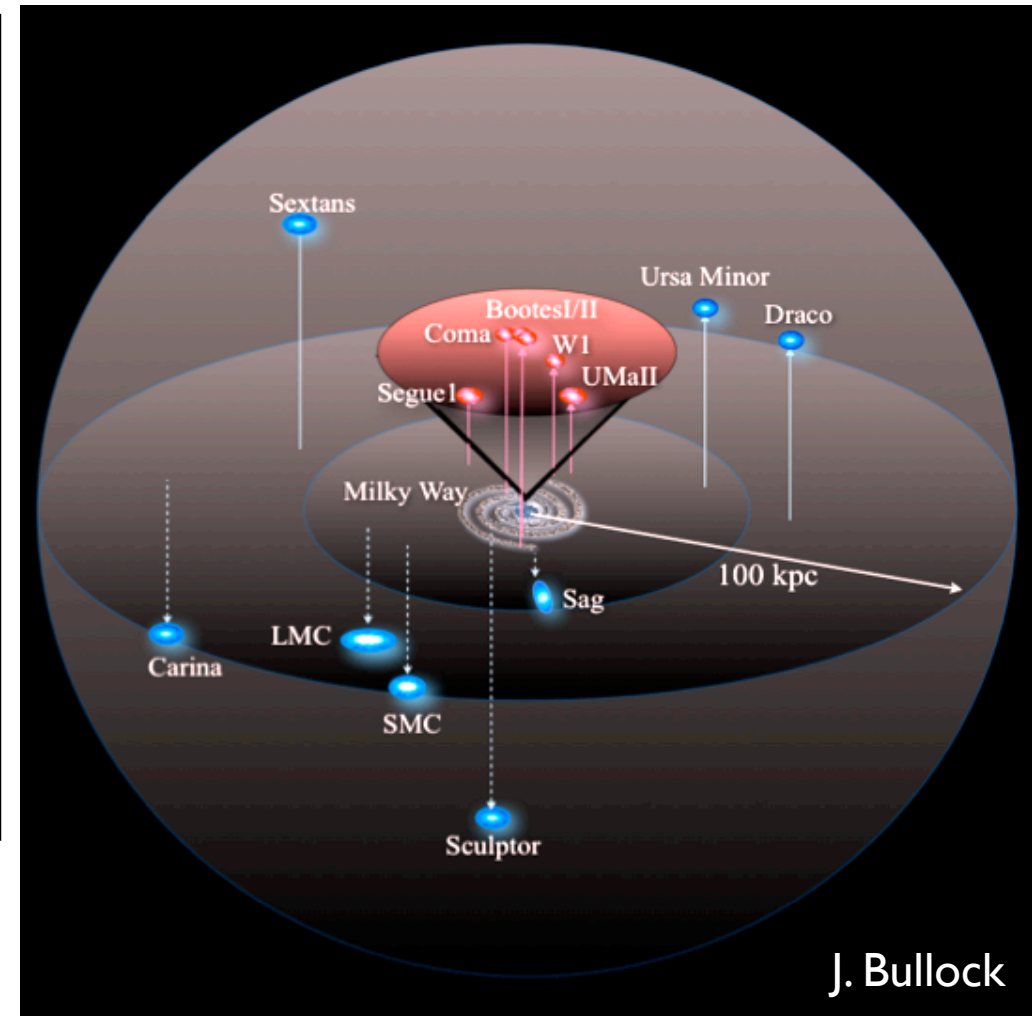
All-sky maps of the *Sommerfeld*-enhanced annihilation surface brightness from all VLII DM particles.

Two main “DG Problems” (which may or may not be related)

1) Missing Satellite Problem:

discrepancy between the relatively small number of satellite galaxies known to be orbiting the Milky Way (~20) and the vastly larger number of dark matter subhalos seen in N-body “zoom-in” cosmological simulations (Moore et al. 1999; Klypin et al. 1999; Diemand et al. 2007,2008; Springel et al. 2008).

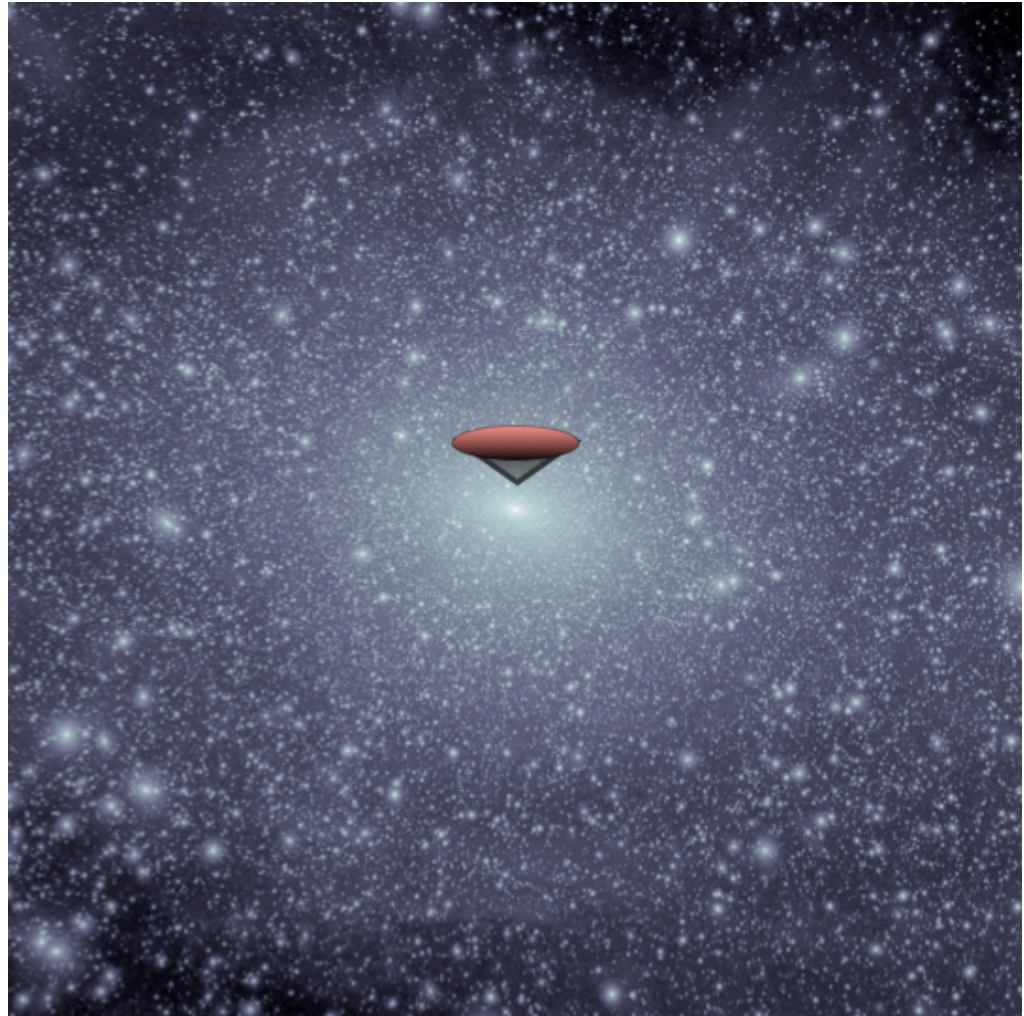
Like many overachievers, DGs have so far failed to live up to our expectations....



Two main “DG Problems” (which may or may not be related)

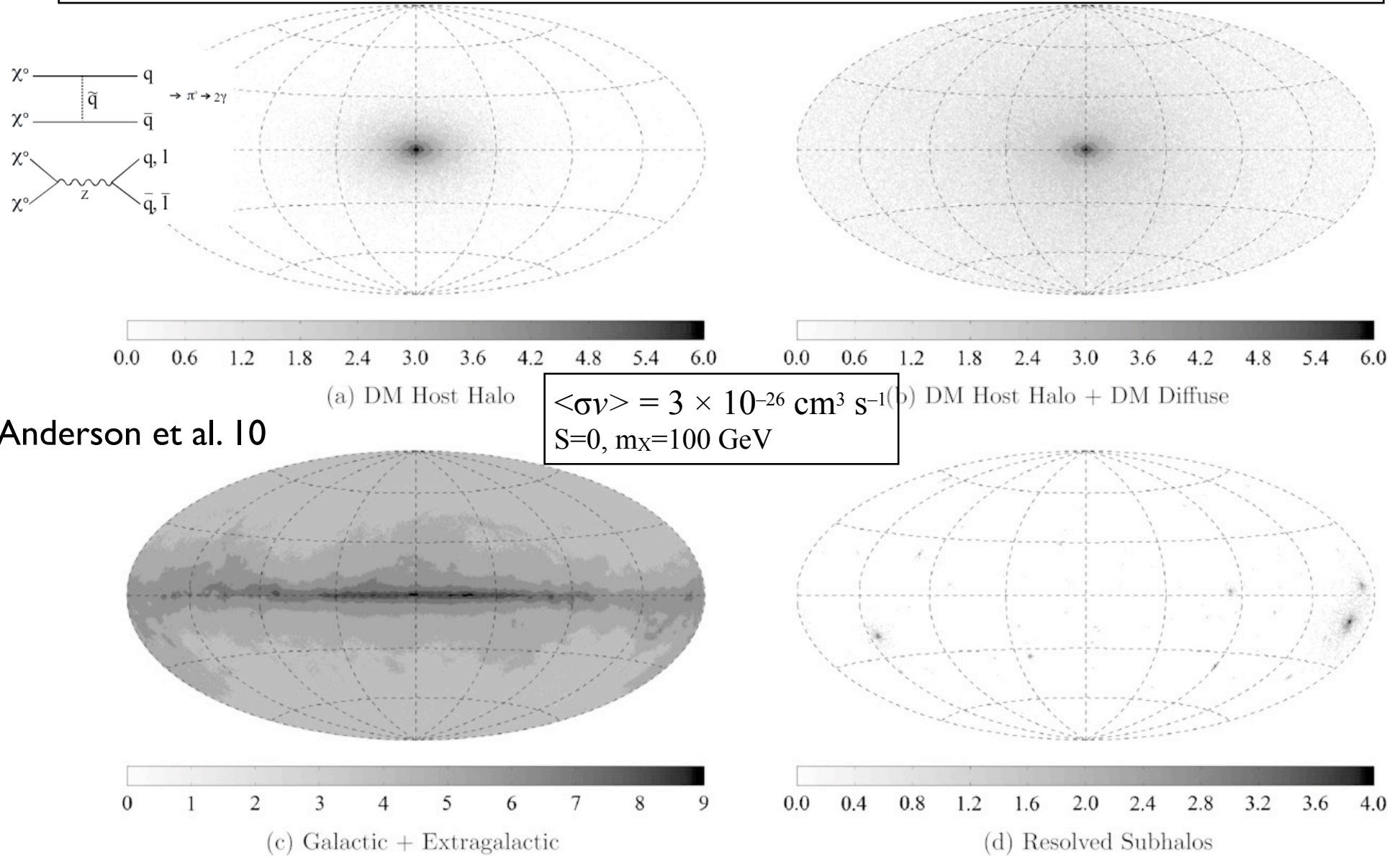
1) Missing Satellite Problem:

discrepancy between the relatively small number of satellite galaxies known to be orbiting the Milky Way (~20) and the vastly larger number of dark matter subhalos seen in N-body “zoom-in” cosmological simulations (Moore et al. 1999; Klypin et al. 1999; Diemand et al. 2007,2008; Springel et al. 2008).



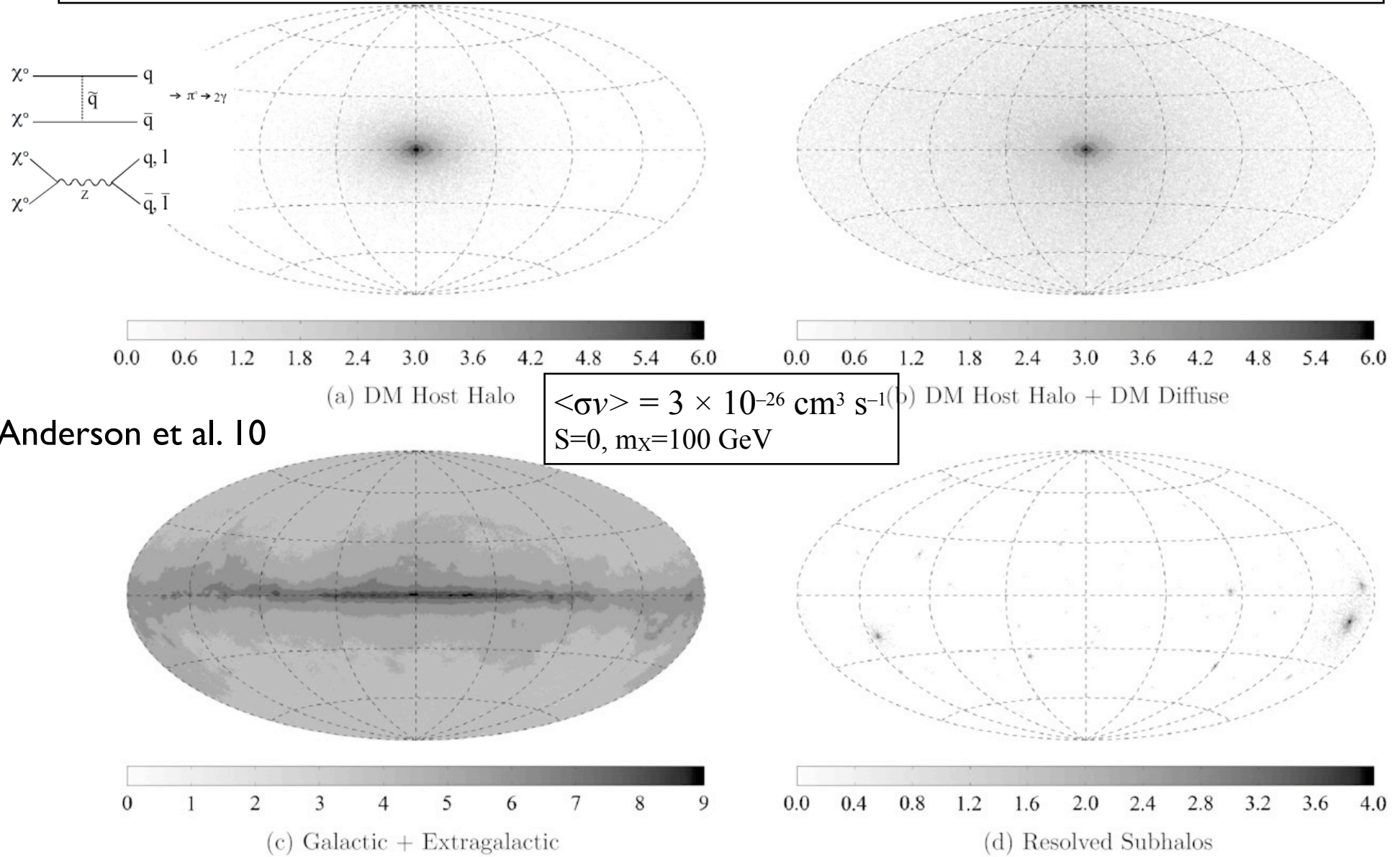
Like many overachievers, DGs have so far failed to live up to our expectations....

From Fermi-LAT Sensitivity to DM Annihilation in *Via Lactea II* Substructure



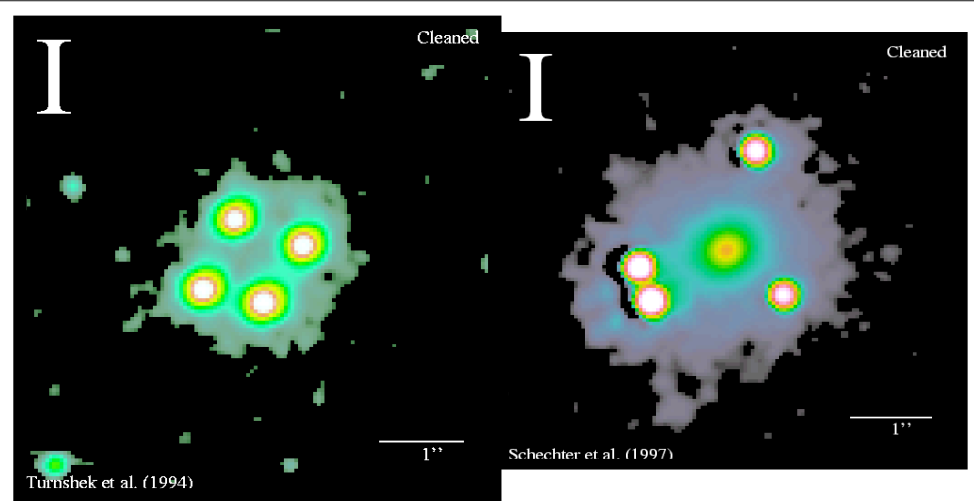
All-sky log(counts) maps for a WIMP subhalo annihilation signal and the three background sources for 10 years of *Fermi*-LAT orbit. (a) DM host halo, (b) DM host halo + DM diffuse, (c) Galactic + extragalactic, and (d) resolved subhalos.

From Fermi-LAT Sensitivity to DM Annihilation in *Via Lactea II* Substructure

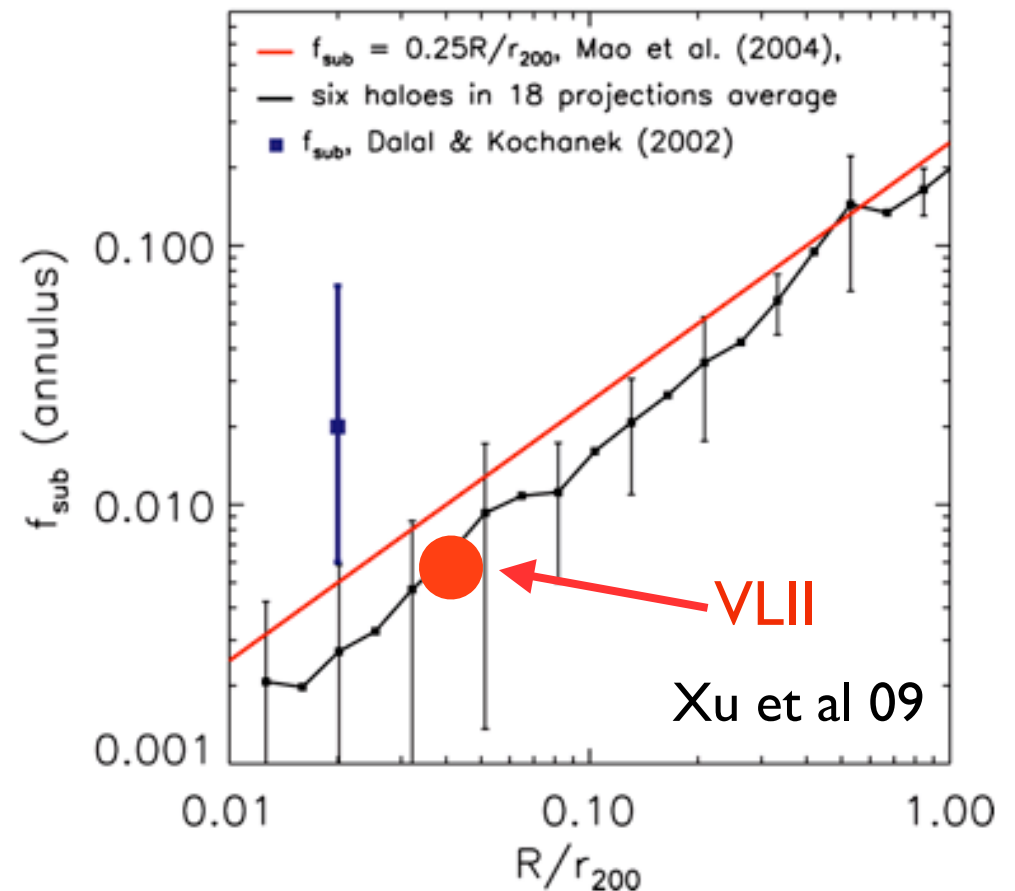
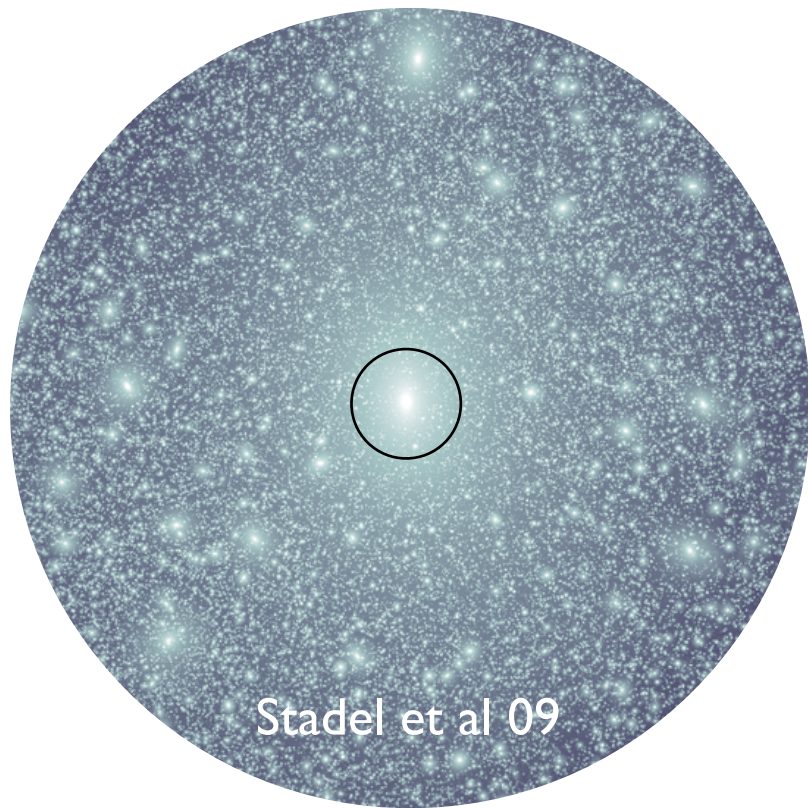


**Things I'd like to hear more about:
annihilating DM and constraints from Fermi!**

Potential perturbations by DM substructures produce anomalies (compared to a smooth mass distribution) in the relative magnifications of strong gravitational lenses (Metcalf & Madau 01, Chiba 02).



Flux ratio anomalies are observed in multiply-imaged lensed QSOs.



Is there enough substructure in CDM N -body simulations to cause the observed flux anomalies?

~YES (e.g. Diemand et al 08; Metcalf & Amara 12)

NO (e.g. Maccio et al 06; Xu et al 09, 11)

Sensitivity to: ellipticity of lens, intergalactic small-scale structure, baryons, small # of lensed QSOs...

New technique: surface brightness anomalies in bright Einstein rings (Vegetti & Koopmans 09)

Is there enough substructure in CDM N -body simulations to cause the observed flux anomalies?

~YES (e.g. Diemand et al 08; Metcalf & Amara 12)

NO (e.g. Maccio et al 06; Xu et al 09, 11)

Sensitivity to: ellipticity of lens, intergalactic small-scale structure, baryons, small # of lensed QSOs...

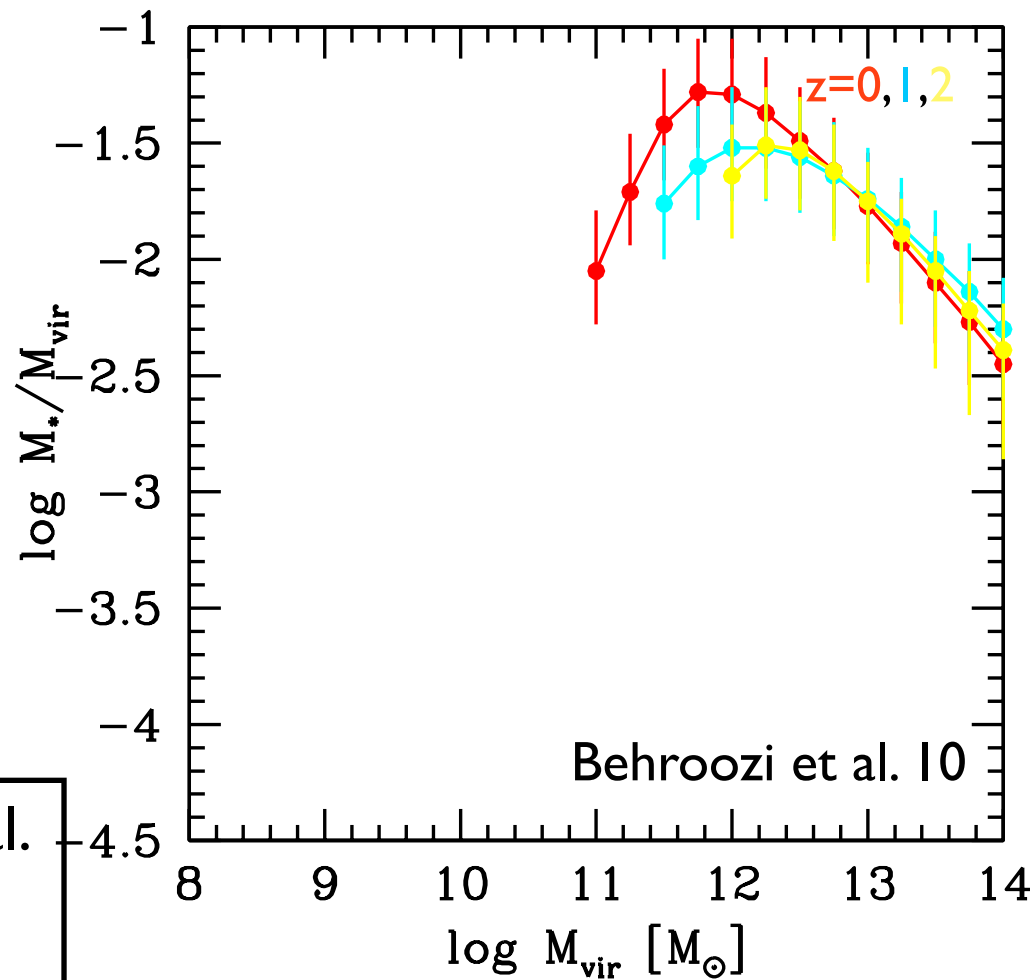
New technique: surface brightness anomalies in bright Einstein rings (Vegetti & Koopmans 09)

**Things I'd like to hear more about:
flux anomalies in CDM vs. WDM**

A solution to the MSP within CDM requires extremely low star formation efficiencies in small dark matter subunits.

Are MW satellites any different than field DGs?

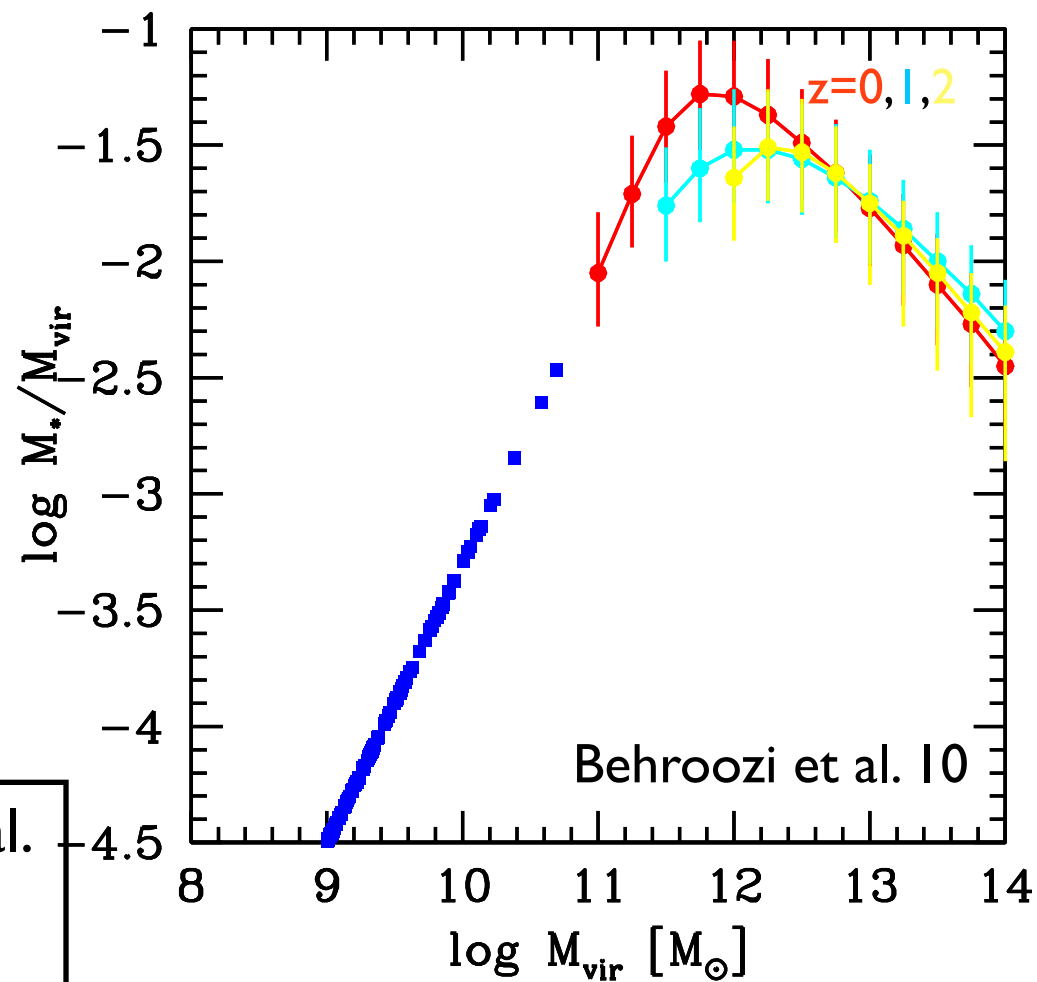
Particle Tagging Technique (Rashkov et al. 12; Cooper et al. 10): subset of VLII DM particles in each of 3,200 progenitor subhalos is tagged as stars at infall, when star particles acquire a stellar mass, an age, and a metallicity. Subsequent evolution is purely photometric and kinematical in character, as the collisionless stellar populations age and are accreted and disrupted in a “live host”.



A solution to the MSP within CDM requires extremely low star formation efficiencies in small dark matter subunits.

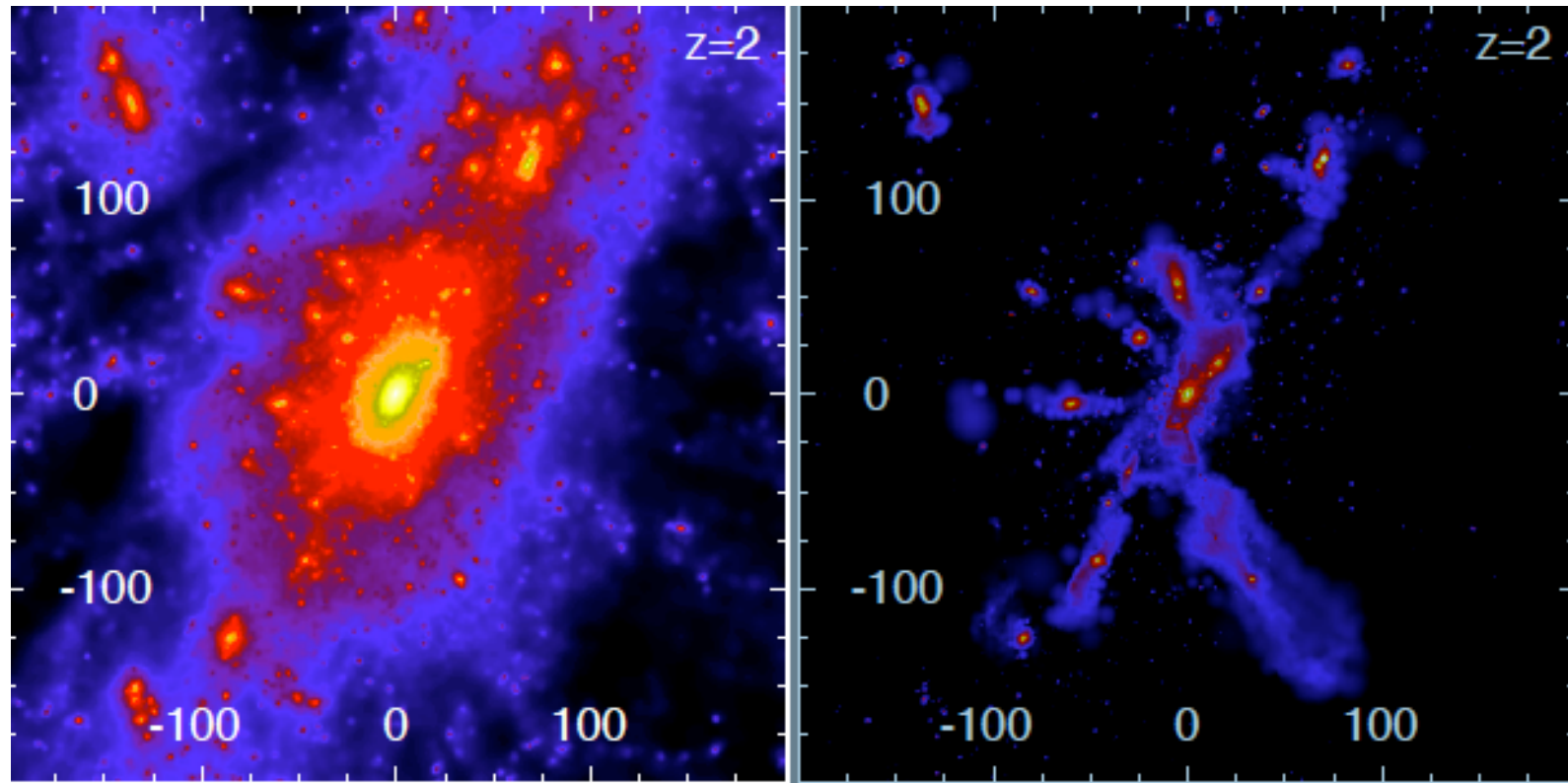
Are MW satellites any different than field DGs?

Particle Tagging Technique (Rashkov et al. 12; Cooper et al. 10): subset of VLII DM particles in each of 3,200 progenitor subhalos is tagged as stars at infall, when star particles acquire a stellar mass, an age, and a metallicity. Subsequent evolution is purely photometric and kinematical in character, as the collisionless stellar populations age and are accreted and disrupted in a “live host”.



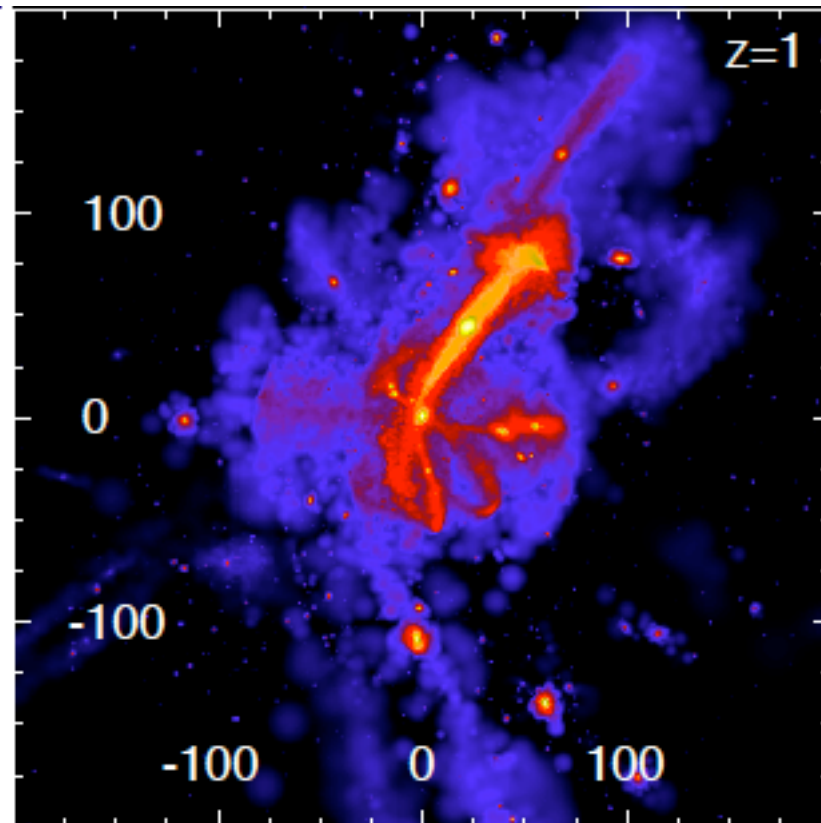
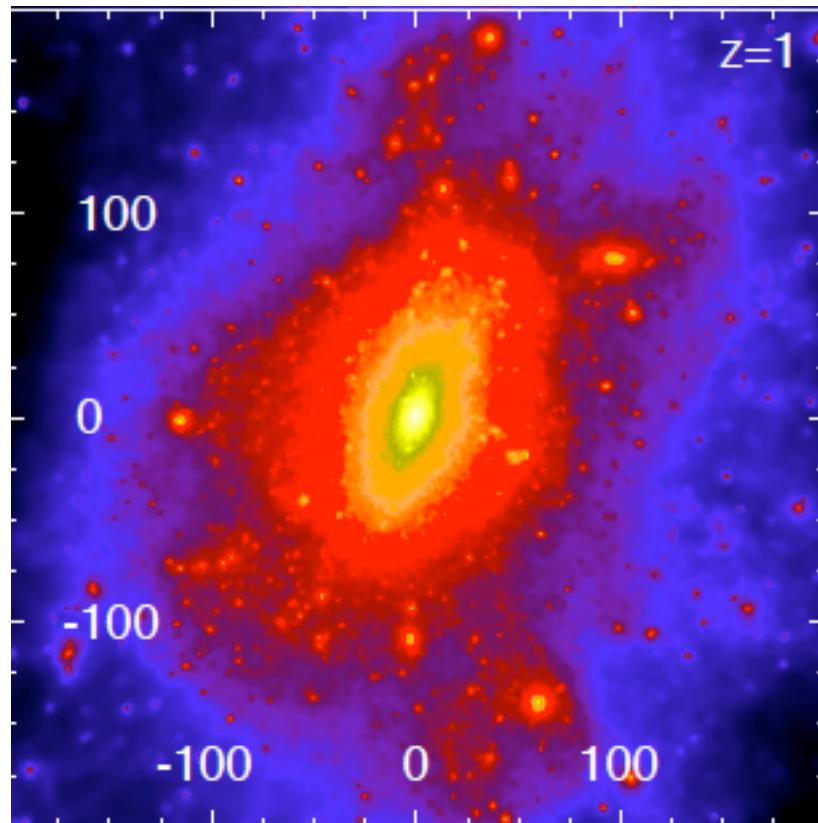
DM

STARS



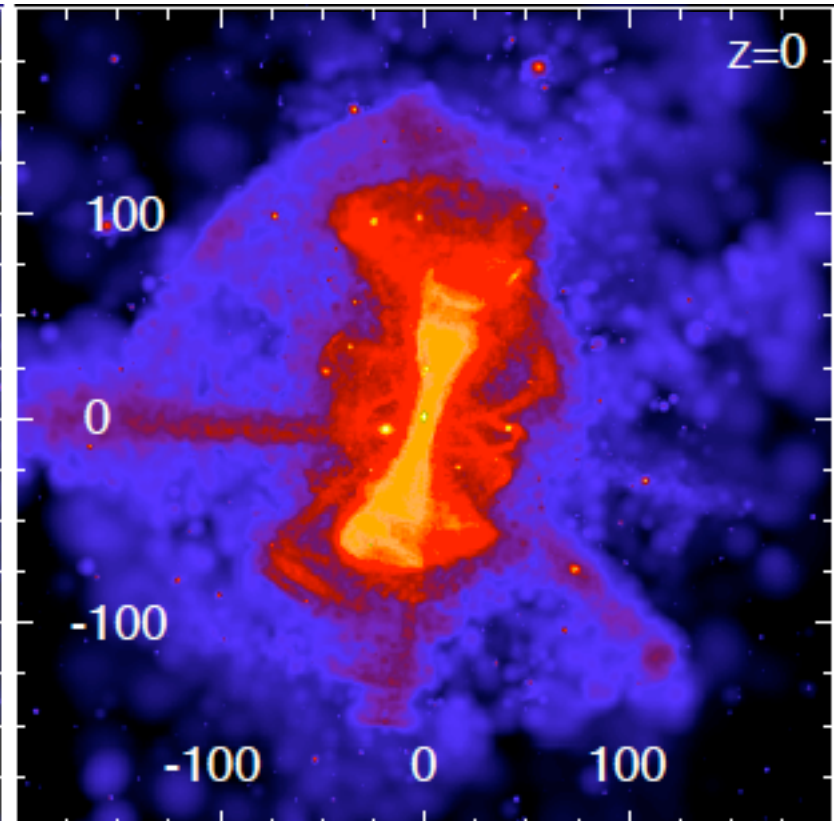
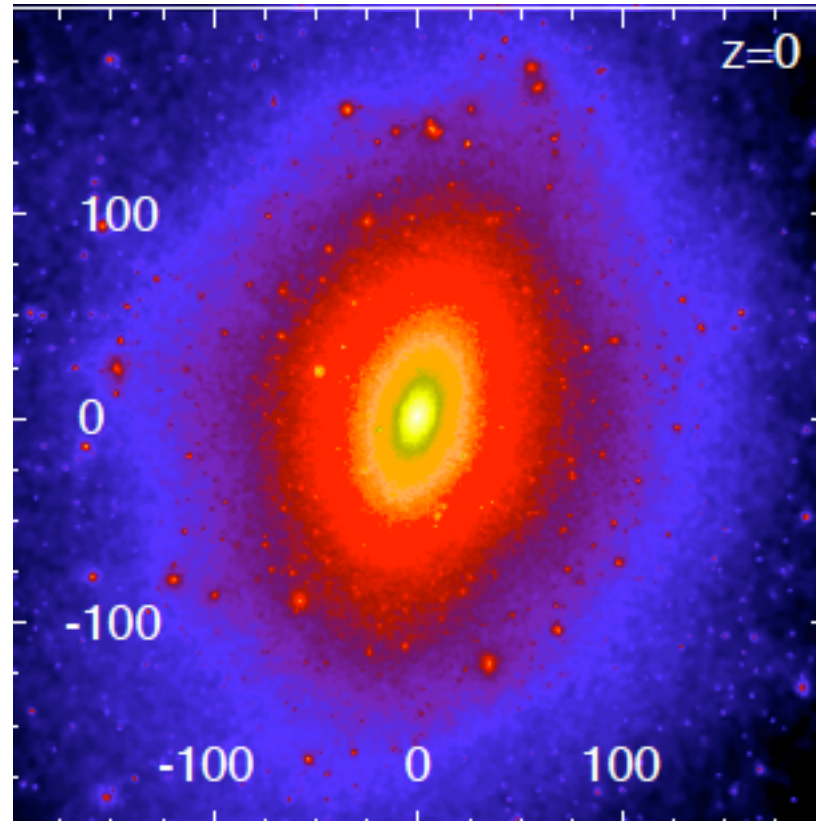
DM

STARS

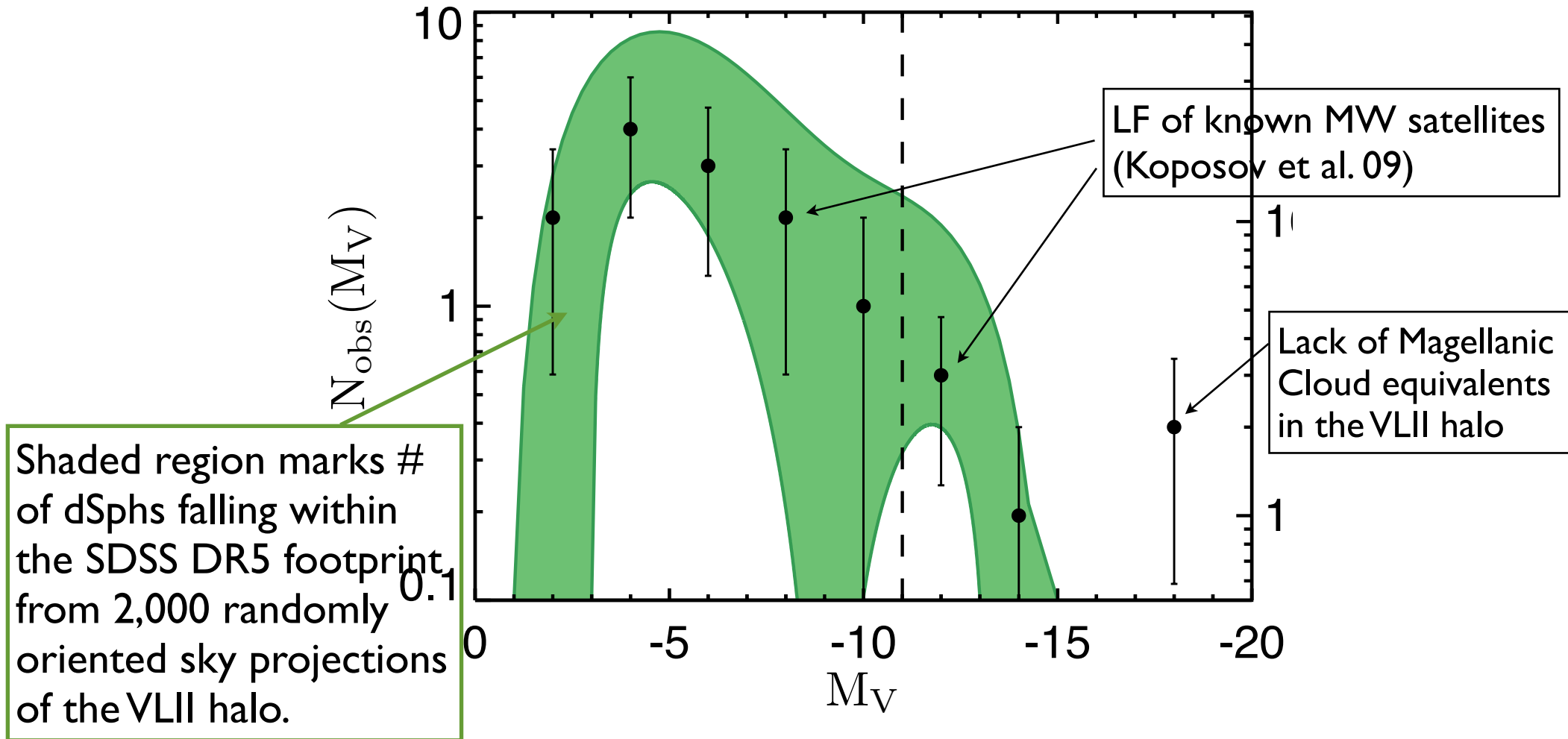


DM

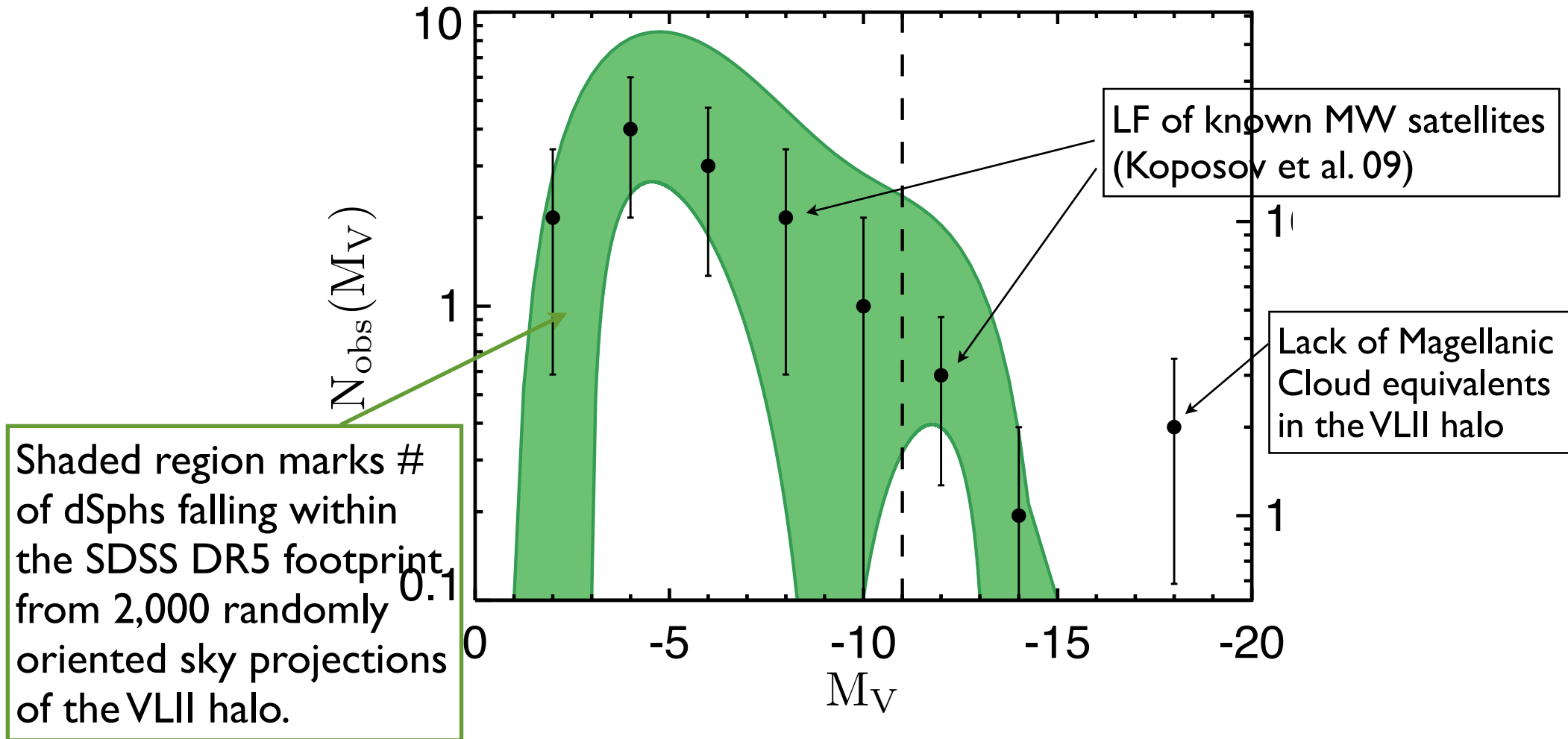
STARS



Luminosity function of VLII satellites detectable by the SDSS



Luminosity function of VLII satellites detectable by the SDSS



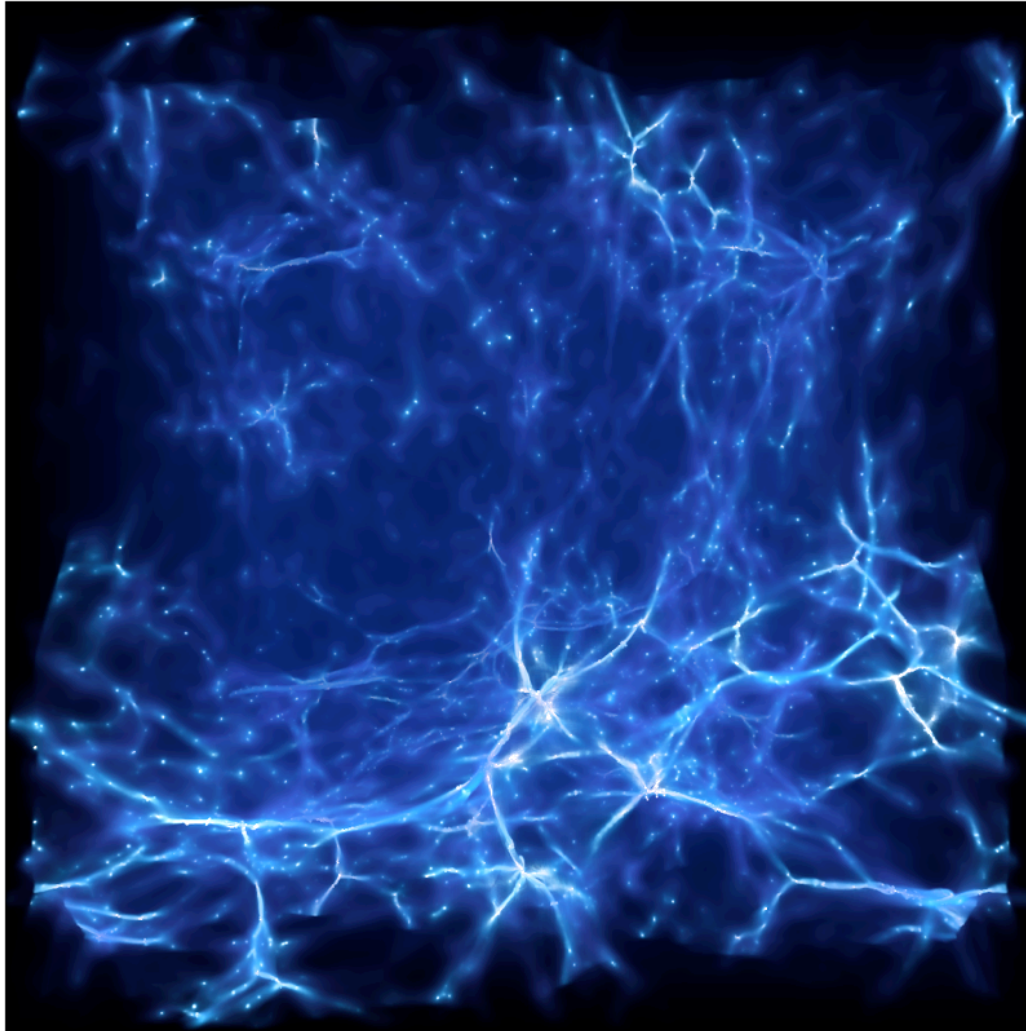
TILHMA: SF efficiencies of field DGs vs MW satellites 📌 **internal processes determine M^*/M_h**

DG Formation with H₂-Regulated SF

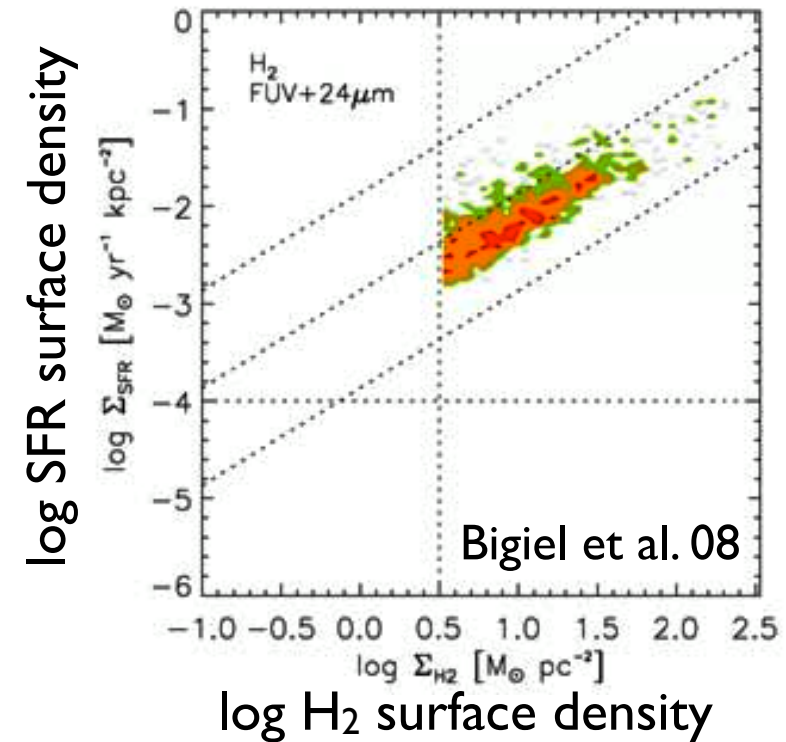
$$\dot{\Sigma}_* = \epsilon f_{\text{H}_2} \frac{\Sigma_g}{t_{\text{ff}}}$$

SF inefficient at low Σ_g and Z_g

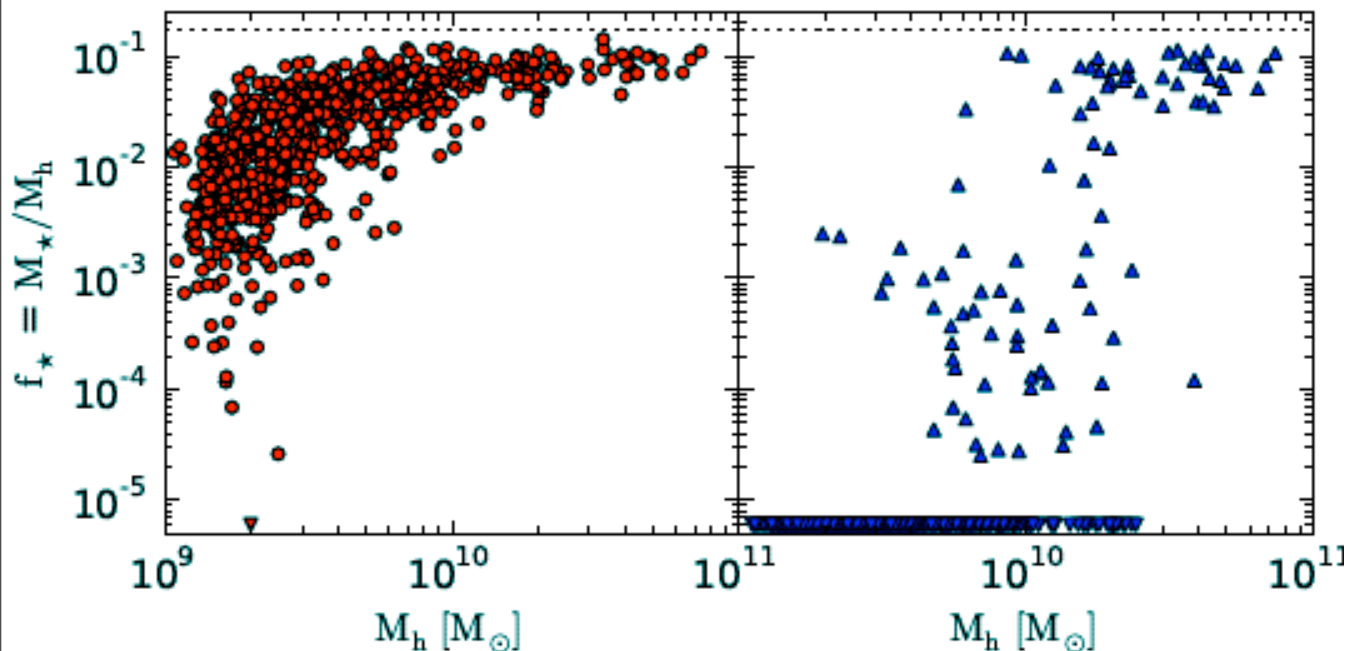
$$f_{\text{H}_2} = f_{\text{H}_2}(\Sigma_g, Z_g, J_{\text{LW}})$$



Star formation correlates strongly with the molecular content of a galaxy



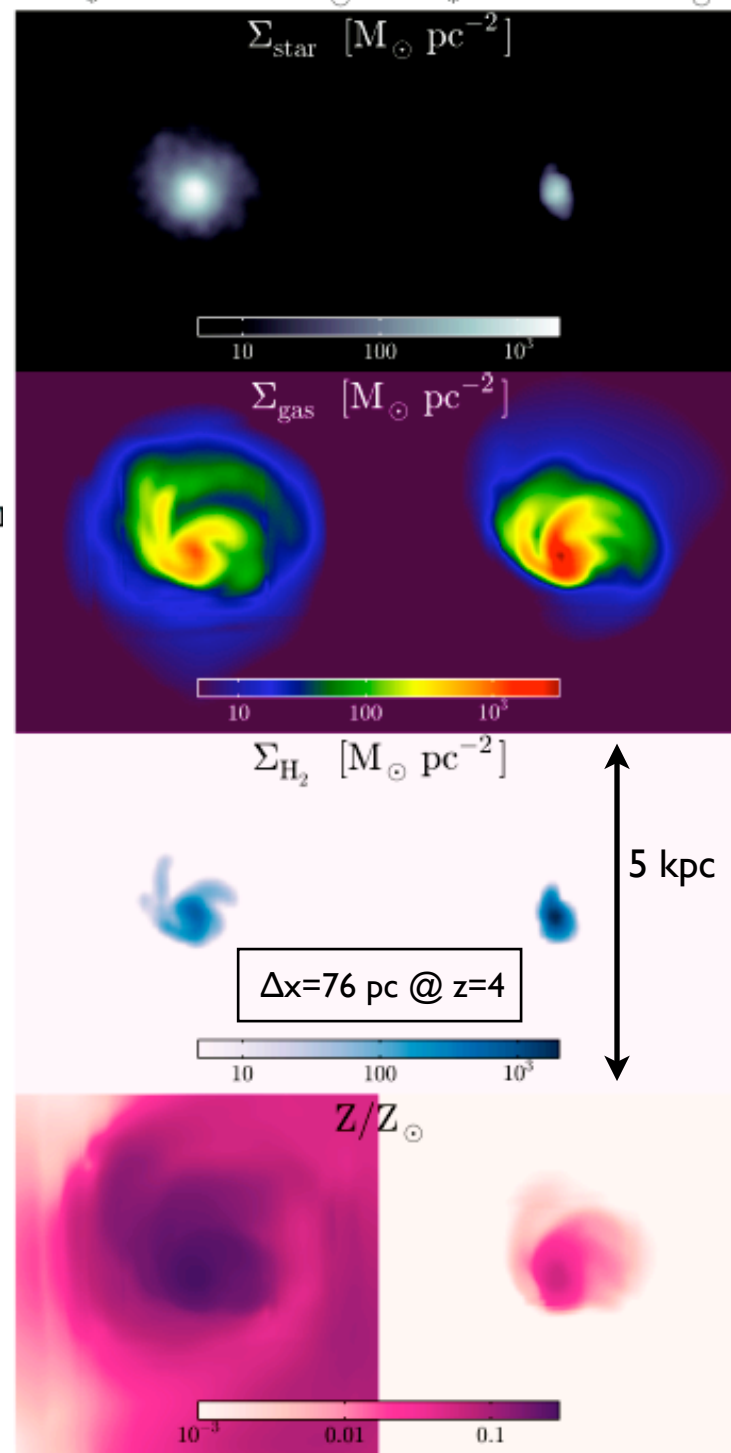
e.g. Robertson & Kravtsov 08; Gnedin et al. 09; Kuhlen et al. 12

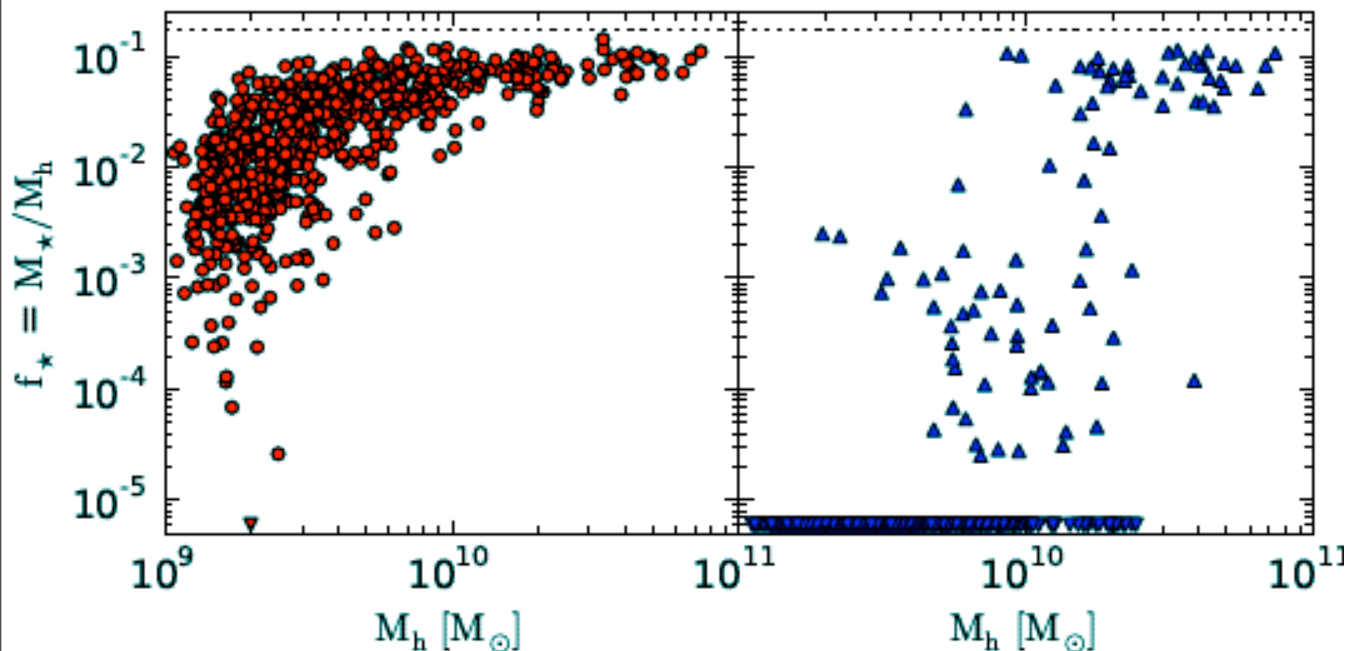


Stellar mass fraction f_* vs. total halo mass in a simulation with standard SF (left) and with H_2 -regulated SF (right) at $z = 4$.

A comparison of the baryonic structure of a DG halo at $z = 4$. The stellar content is greatly suppressed in the KMT09 low mass halo. (From Kuhlen et al. 2012.)

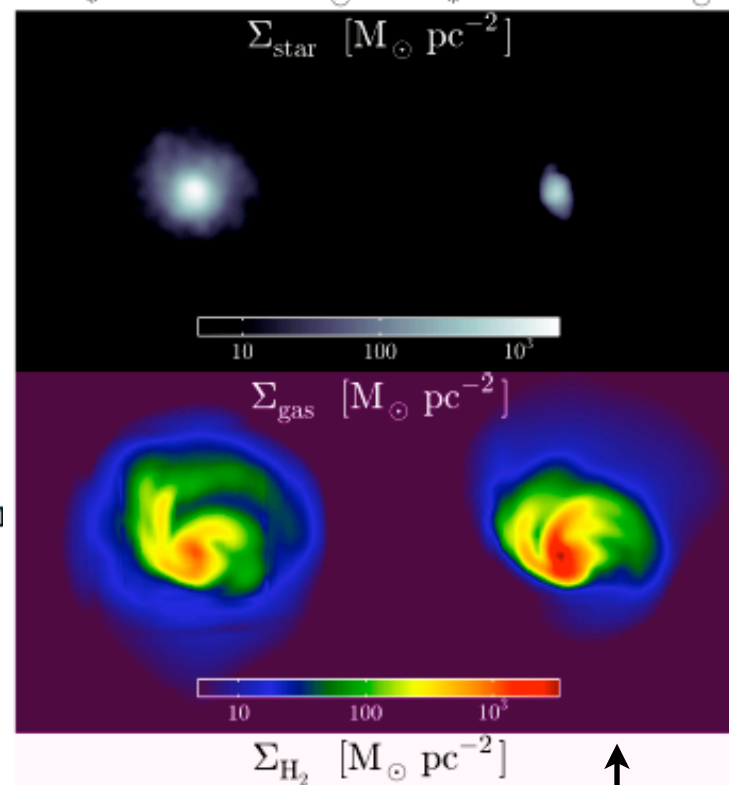
halo0185: $M_h = 5.8 \times 10^9 M_\odot$
 $M_* = 3.3 \times 10^8 M_\odot$ $M_* = 4.0 \times 10^7 M_\odot$





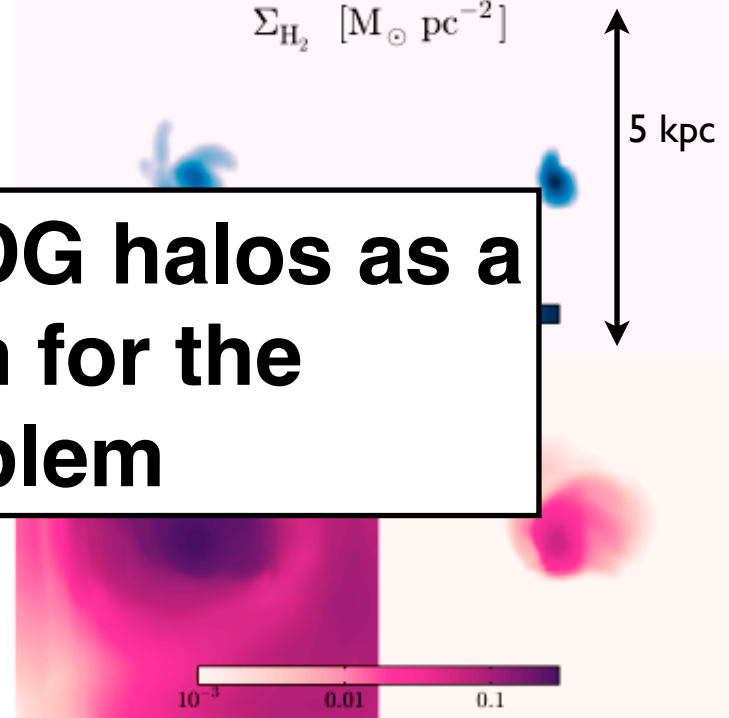
Stellar mass fraction f_* vs. total halo mass in a simulation with standard SF (left) and with H_2 -regulated SF (right) at $z = 4$.

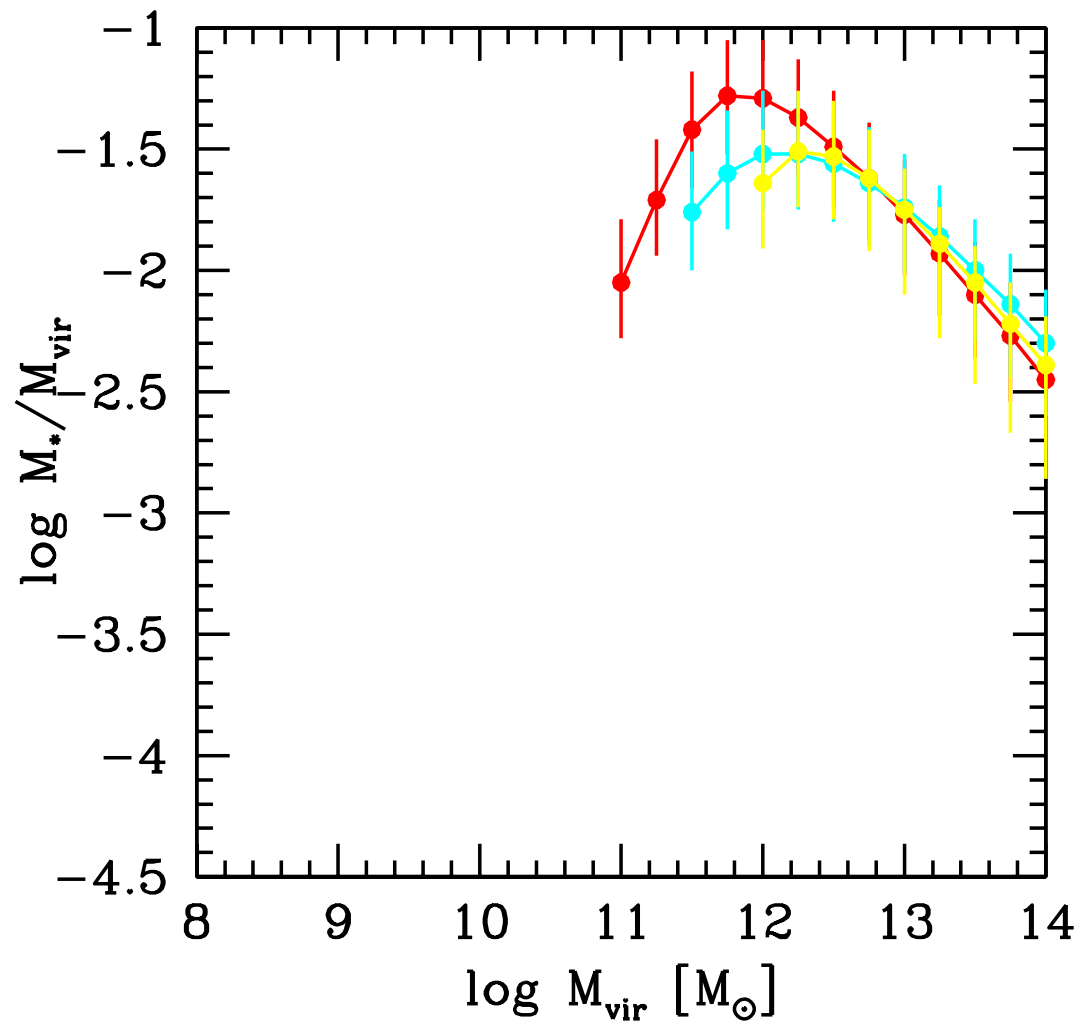
halo0185: $M_h = 5.8 \times 10^9 M_\odot$
 $M_* = 3.3 \times 10^8 M_\odot$ $M_* = 4.0 \times 10^7 M_\odot$

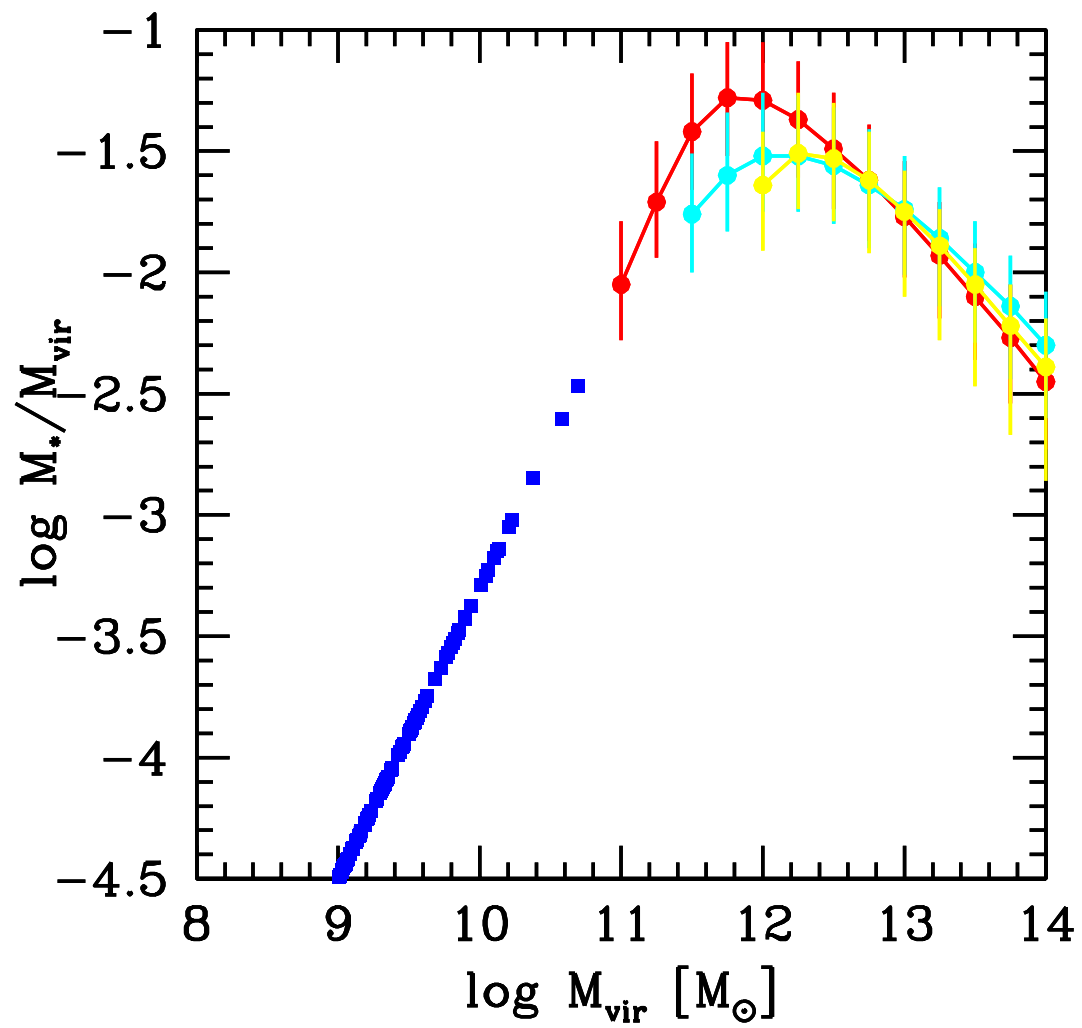


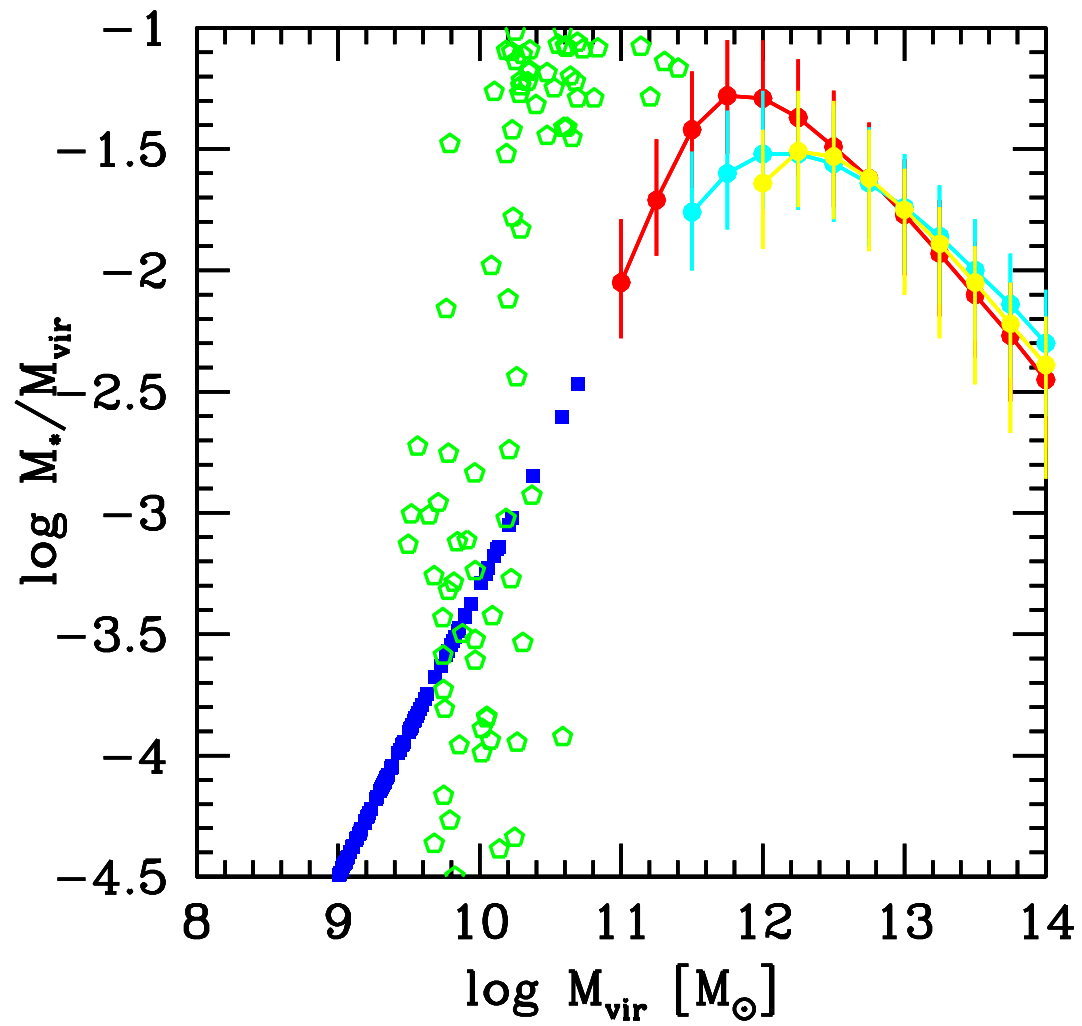
TILHMA: Inefficient SF in DG halos as a plausible explanation for the substructure problem

A comparison of the baryonic structure of a DG halo at $z = 4$. The stellar content is greatly suppressed in the KMT09 low mass halo. (From Kuhlen et al. 2012.)

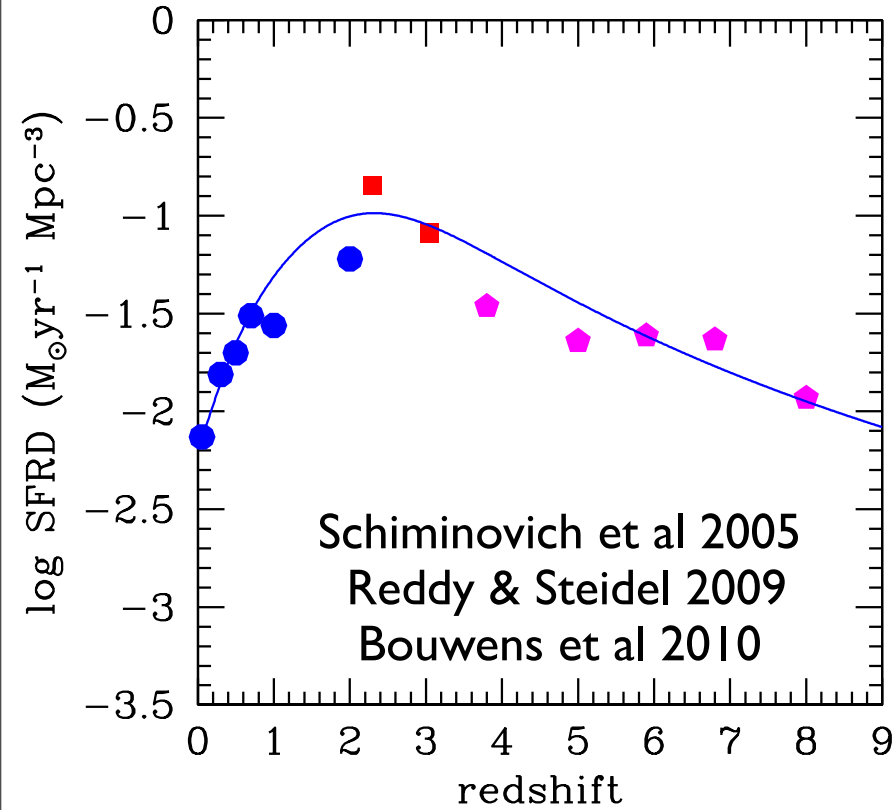








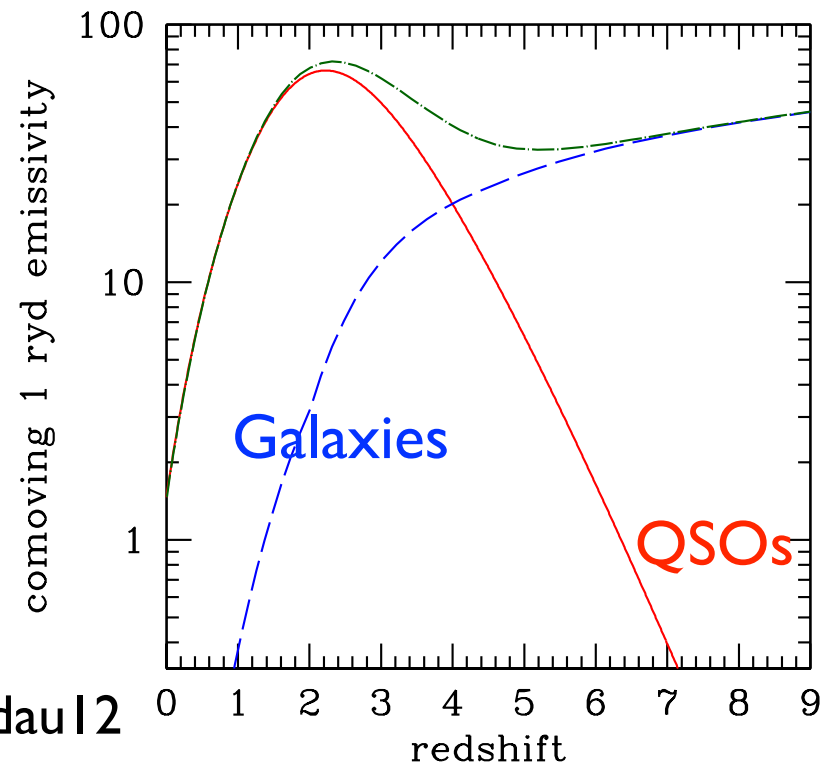
Can DGs reionize the universe?



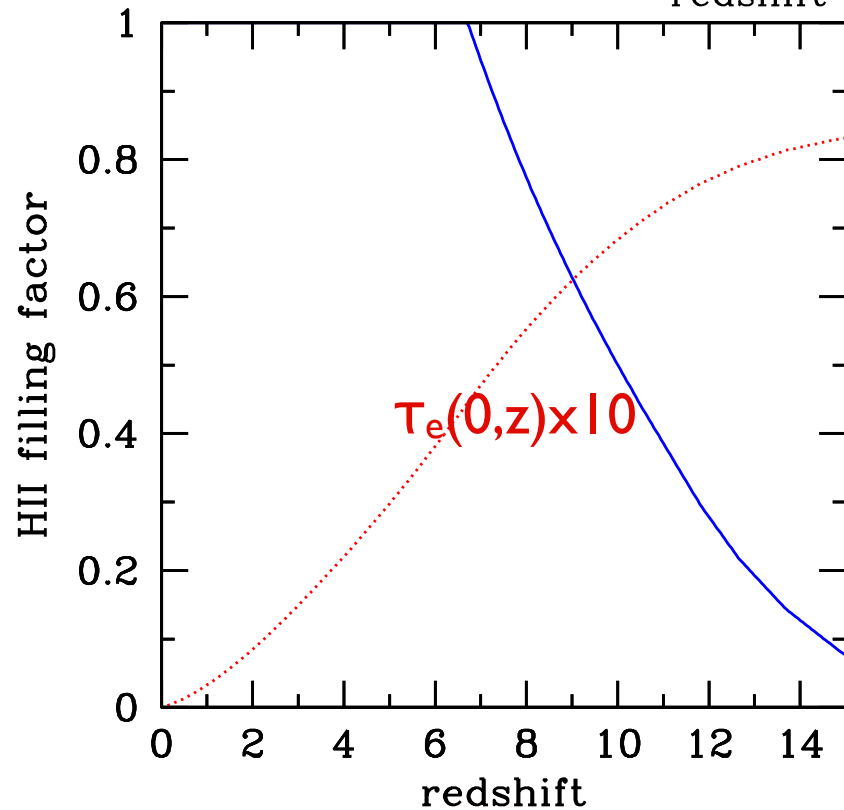
$$\langle f_{\text{esc}} \rangle = 1.8 \times 10^{-4} (1+z)^{3.4}$$

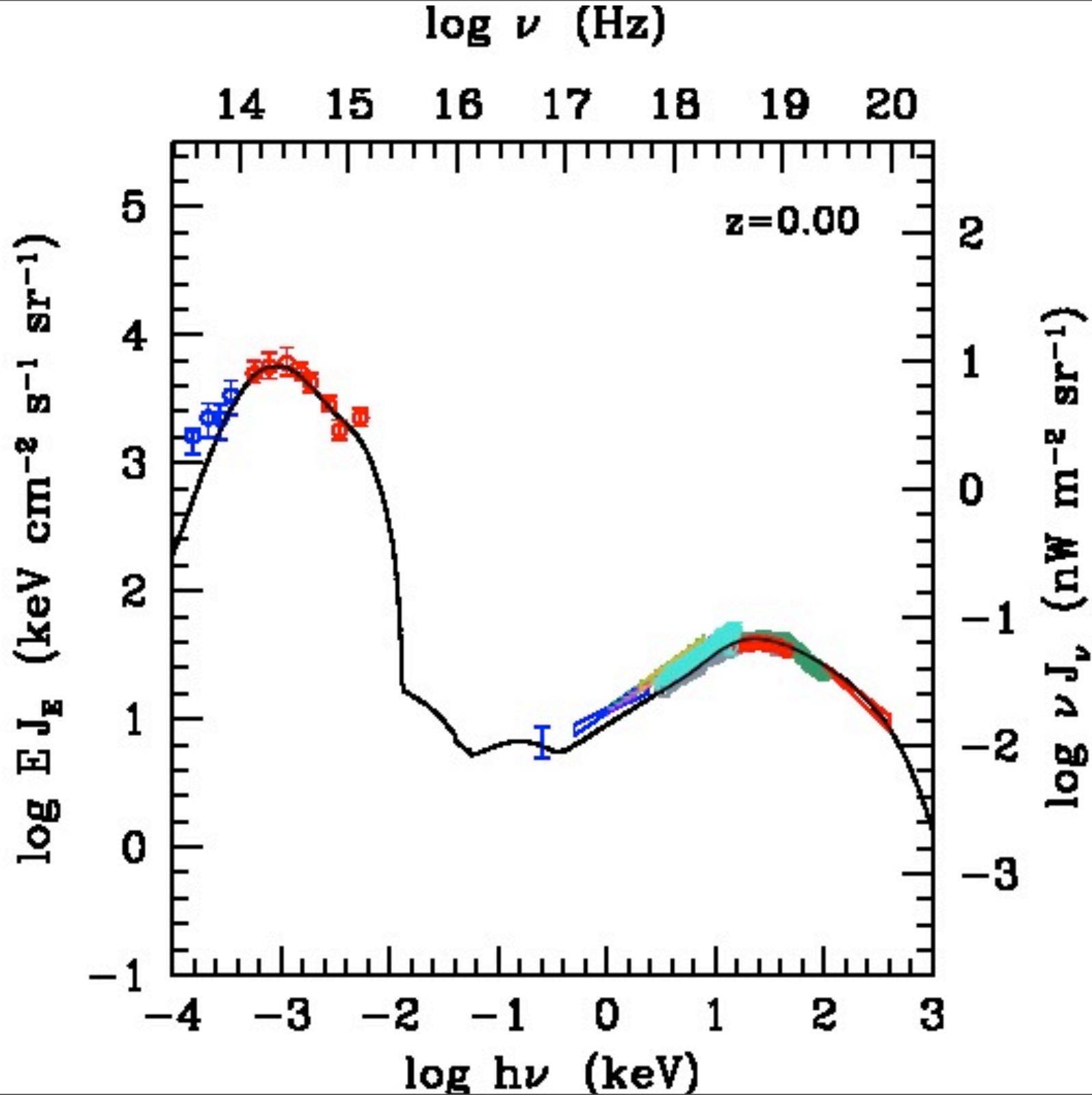
$$\langle f_{\text{esc}} \rangle = 2.6\% \quad @ \quad z = 3.3$$

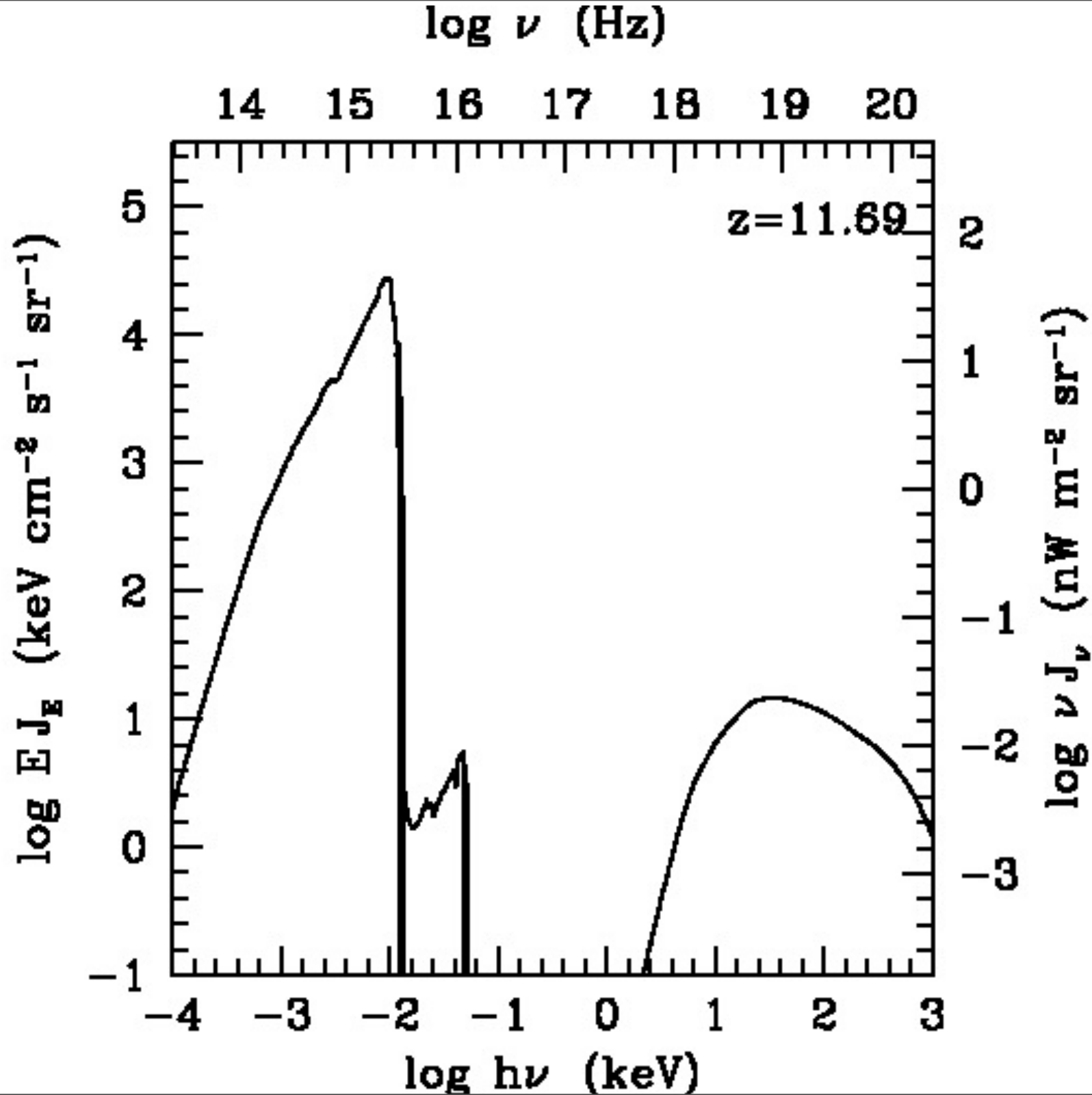
$$\langle f_{\text{esc}} \rangle = 21\% \quad @ \quad z = 7.0$$



Haardt & Madau 12







CUBA

COSMIC ULTRAVIOLET BACKGROUND

A COSMOLOGICAL 1D RADIATIVE TRANSFER CODE BY
FRANCESCO HAARDT AND PIERO MADAU



CUBA is a radiative transfer code that follows the propagation of hydrogen and helium Lyman continuum radiation through a partially ionized and clumpy intergalactic medium. The only sources of ionizing radiation included in CUBA are star-forming galaxies and quasars.

<http://www.ucolick.org/~pmadau/CUBA/HOME.html>

CUBA

COSMIC ULTRAVIOLET BACKGROUND

A COSMOLOGICAL 1D RADIATIVE TRANSFER CODE BY
FRANCESCO HAARDT AND PIERO MADAU



000422

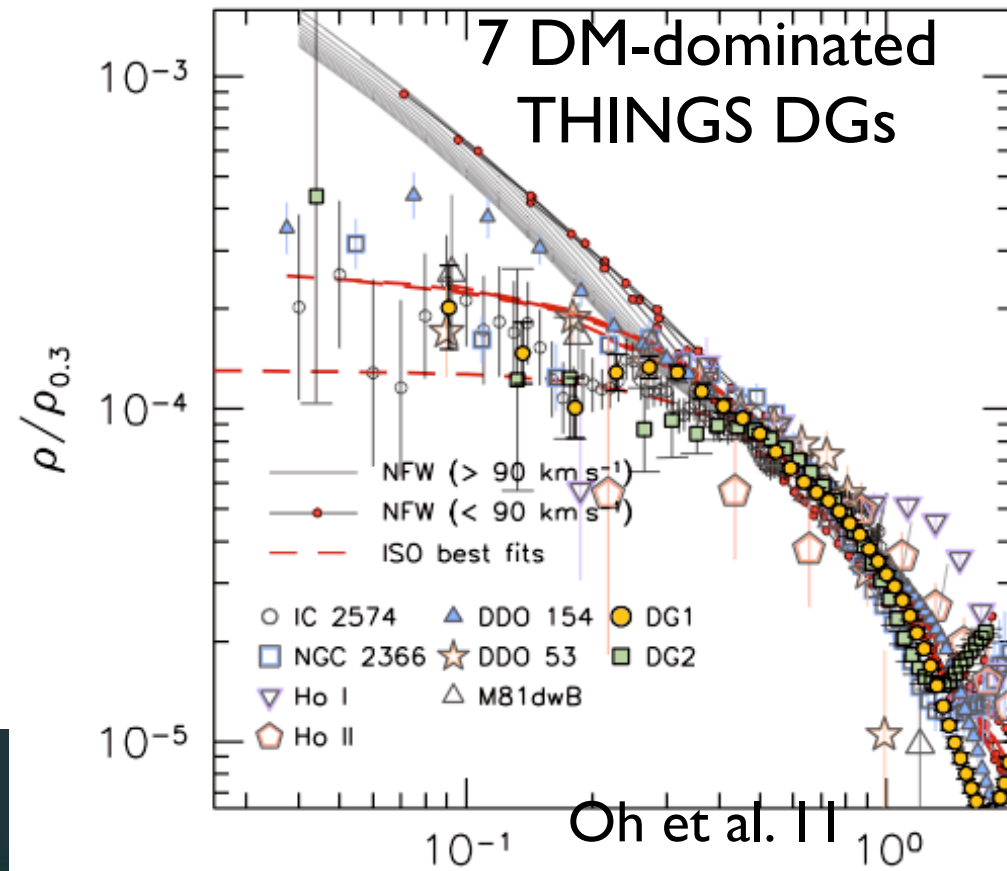
[Contador web](#)

TILHMA: SFH, $z \sim 6$ QSOs, $f_{\text{esc}}(z)$, enough UV to ionize the universe if $\langle f_{\text{esc}} \rangle \sim 0.5$ at high- z ?

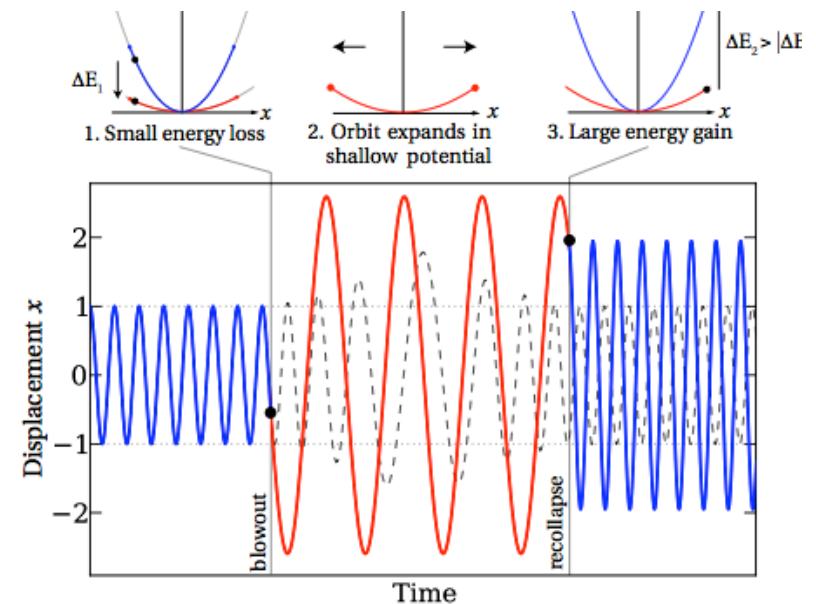
2) Core-Cusp Problem:

most observed DGs in the field have slowly rising rotation curves implying a near constant-density core (de Block et al 10) rather than the cuspy profiles predicted by CDM.

Governato et al. 10



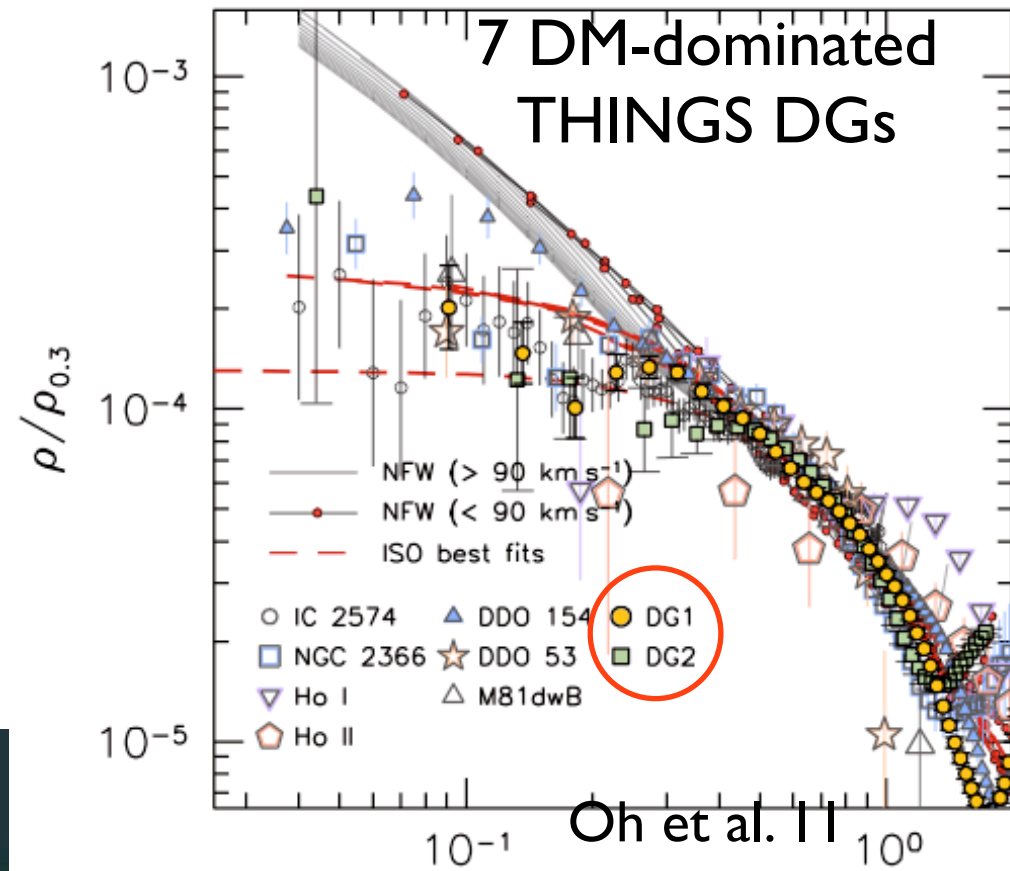
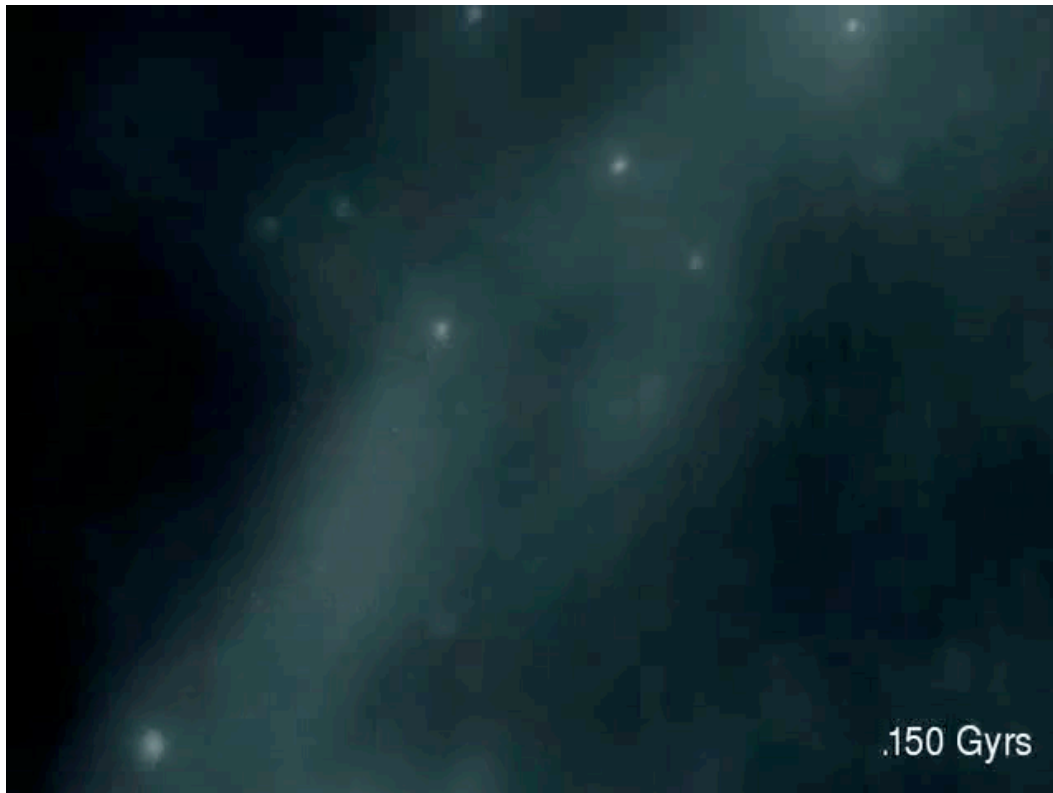
Pontzen & Governato 12



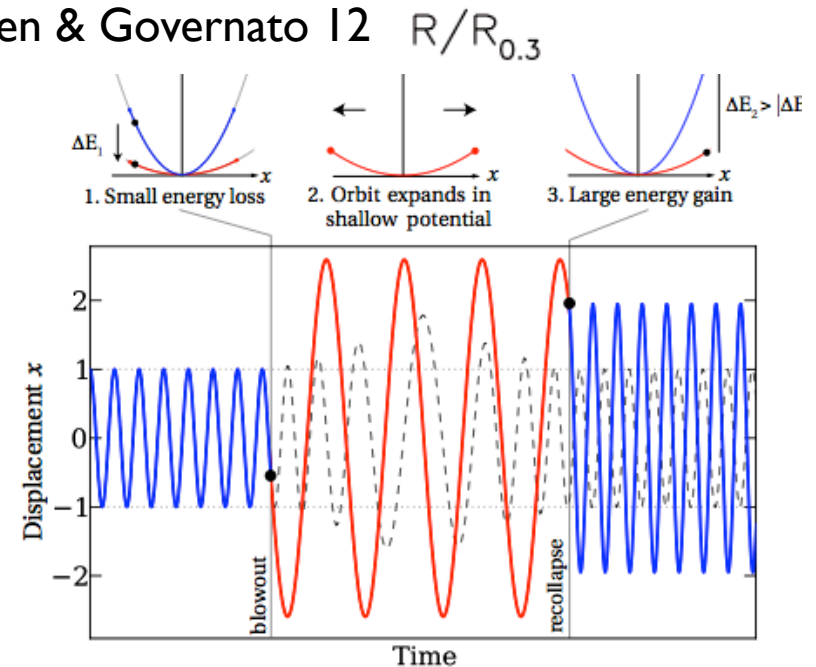
2) Core-Cusp Problem:

most observed DGs in the field have slowly rising rotation curves implying a near constant-density core (de Block et al 10) rather than the cuspy profiles predicted by CDM.

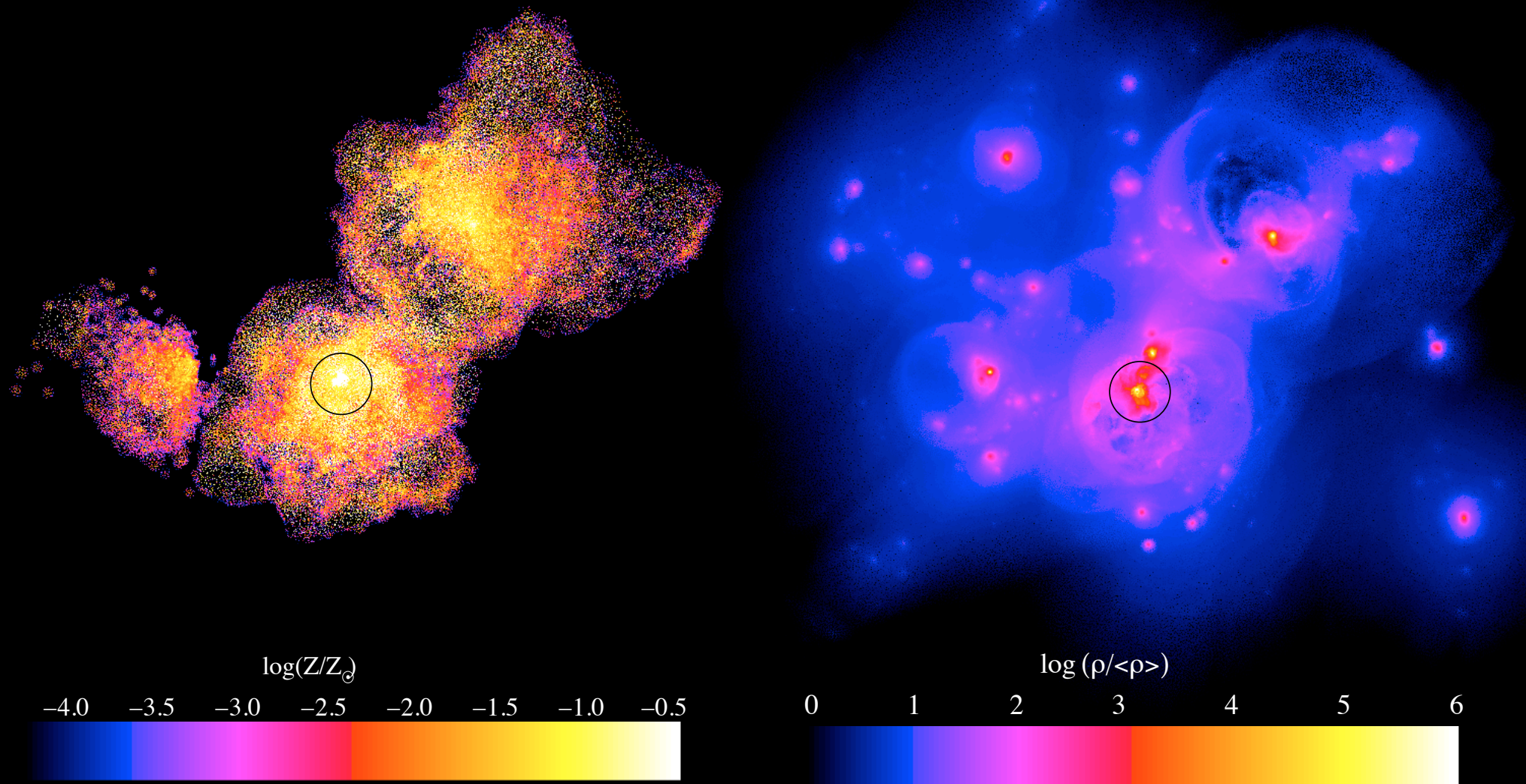
Governato et al. 10



Pontzen & Governato 12

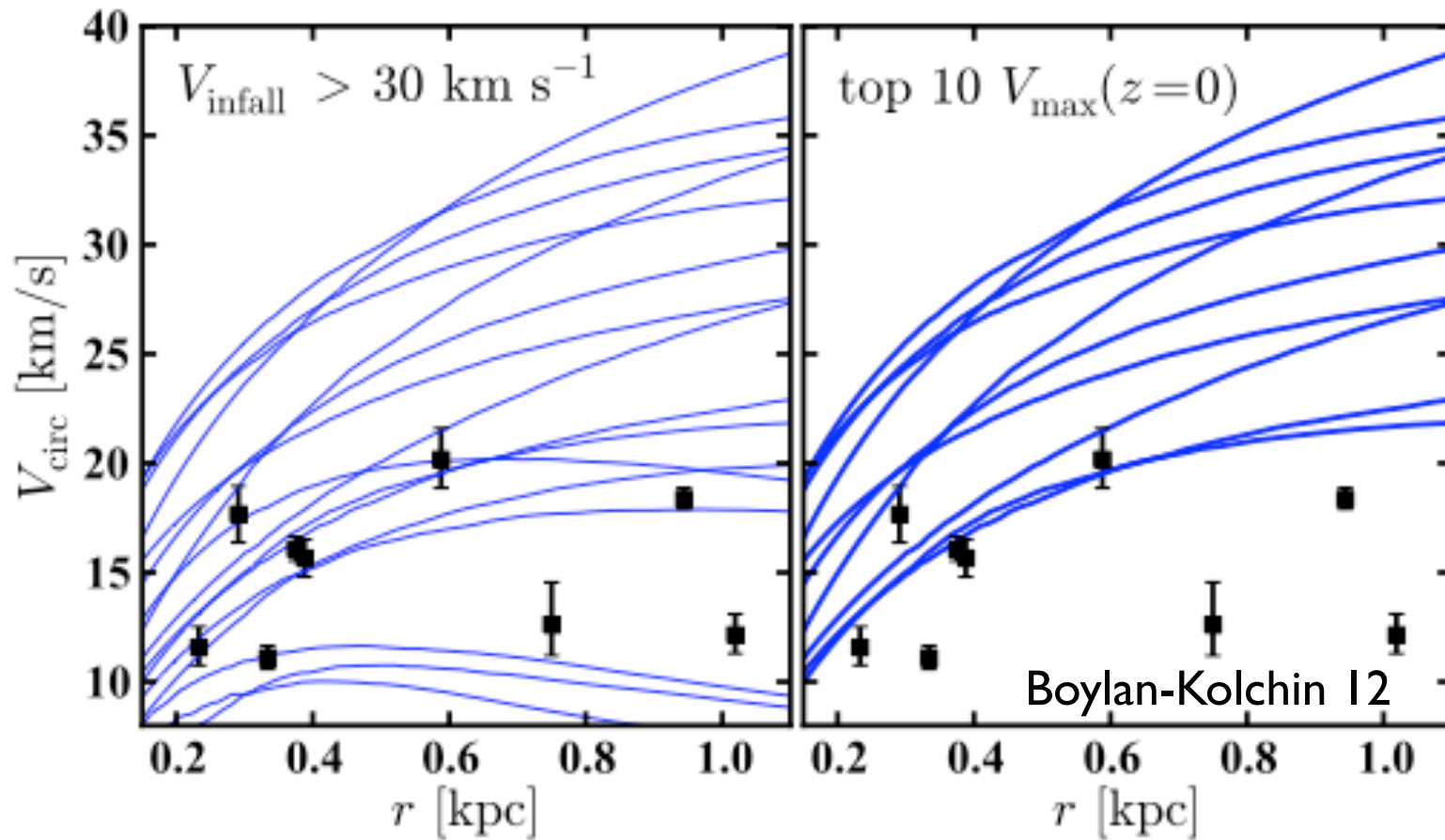


Enrichment of the IGM by DG outflows at $z=3$

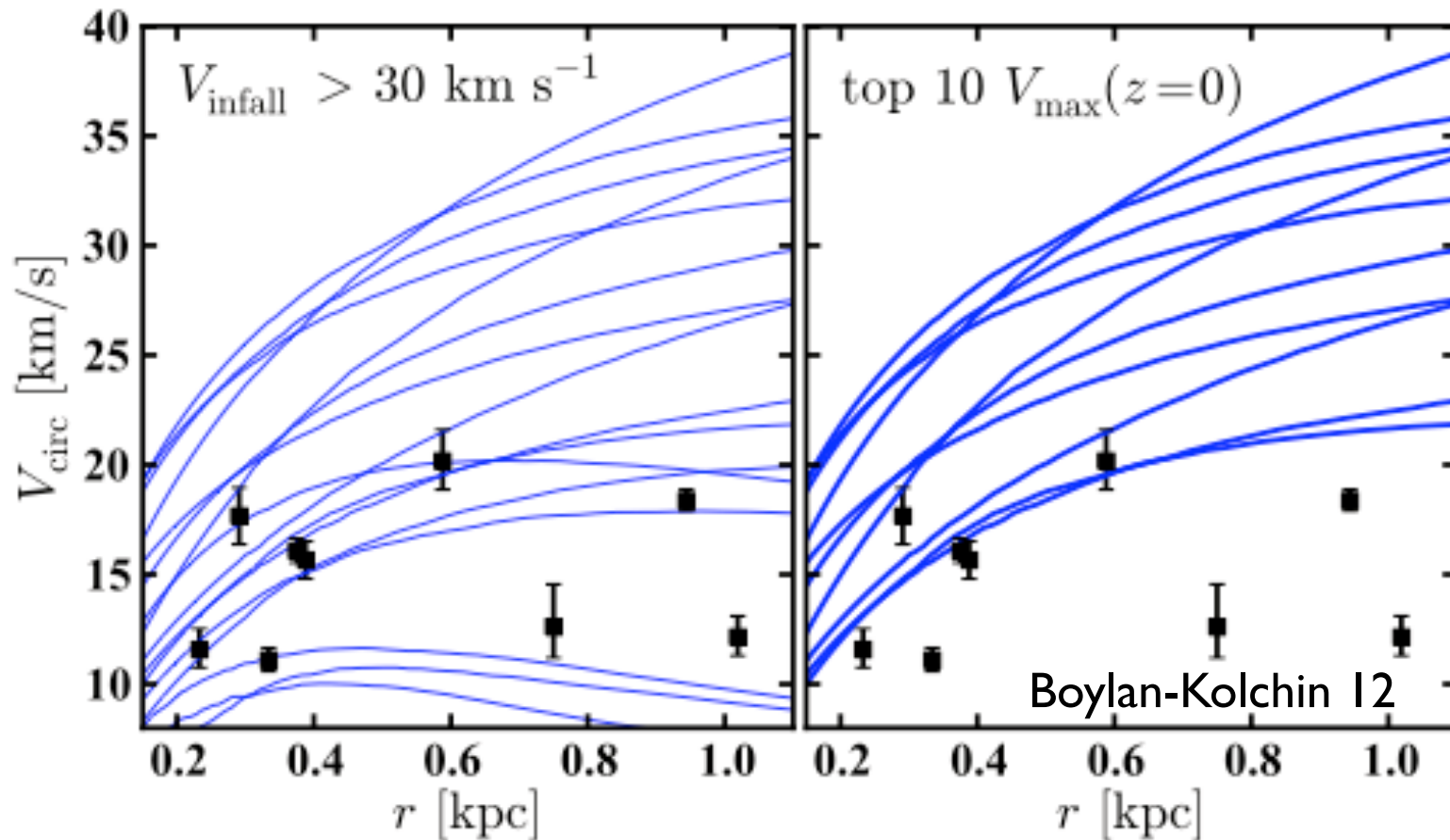


Shen et al. 12

Simulated MW dwarfs too dense compared to observations



Simulated MW dwarfs too dense compared to observations



TILHMA: SN feedback as a plausible explanation for the low inferred densities of MW dwarfs?

THE END