



PennState
Scranton

Constraints on mass and effective temperature for pulsating white dwarfs from parallaxes

Agnès Kim, Ph.D.

White Dwarfs from Physics to Astrophysics
KITP, UC Santa Barbara, 14 November 2022



PennState
Scranton

Toward pipeline asteroseismic fitting of WD stars

Agnès Kim, Ph.D.

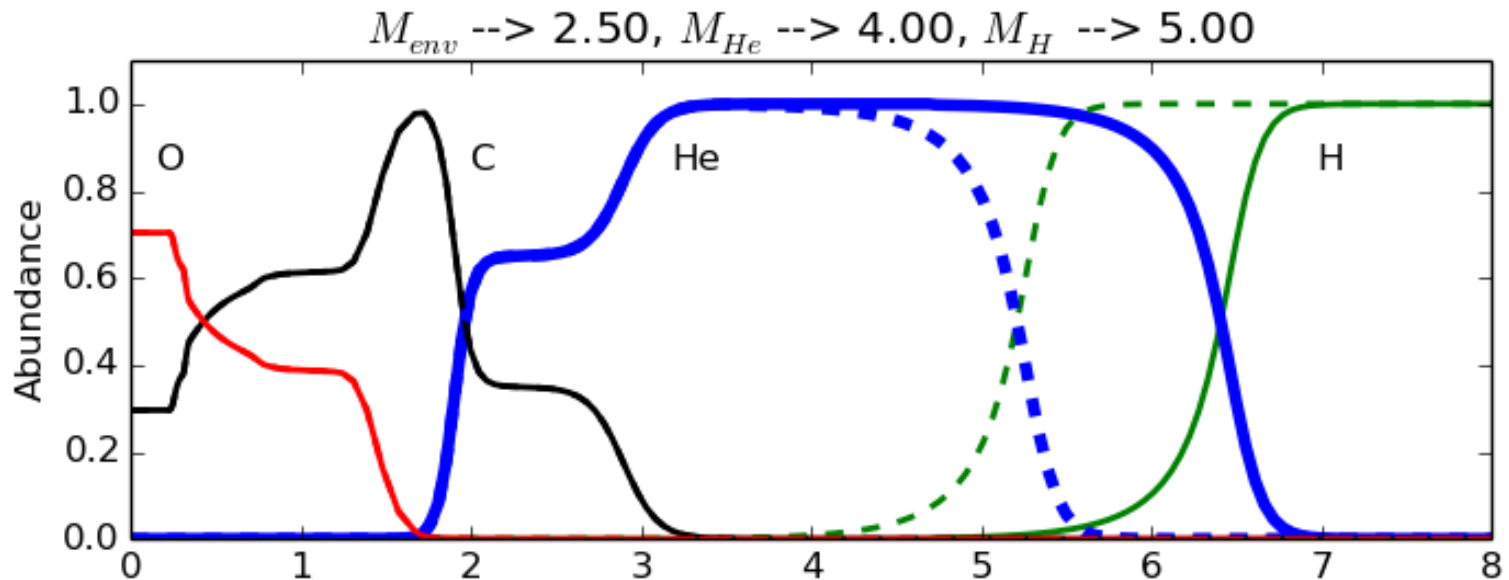
White Dwarfs from Physics to Astrophysics
KITP, UC Santa Barbara, 14 November 2022

Introduction

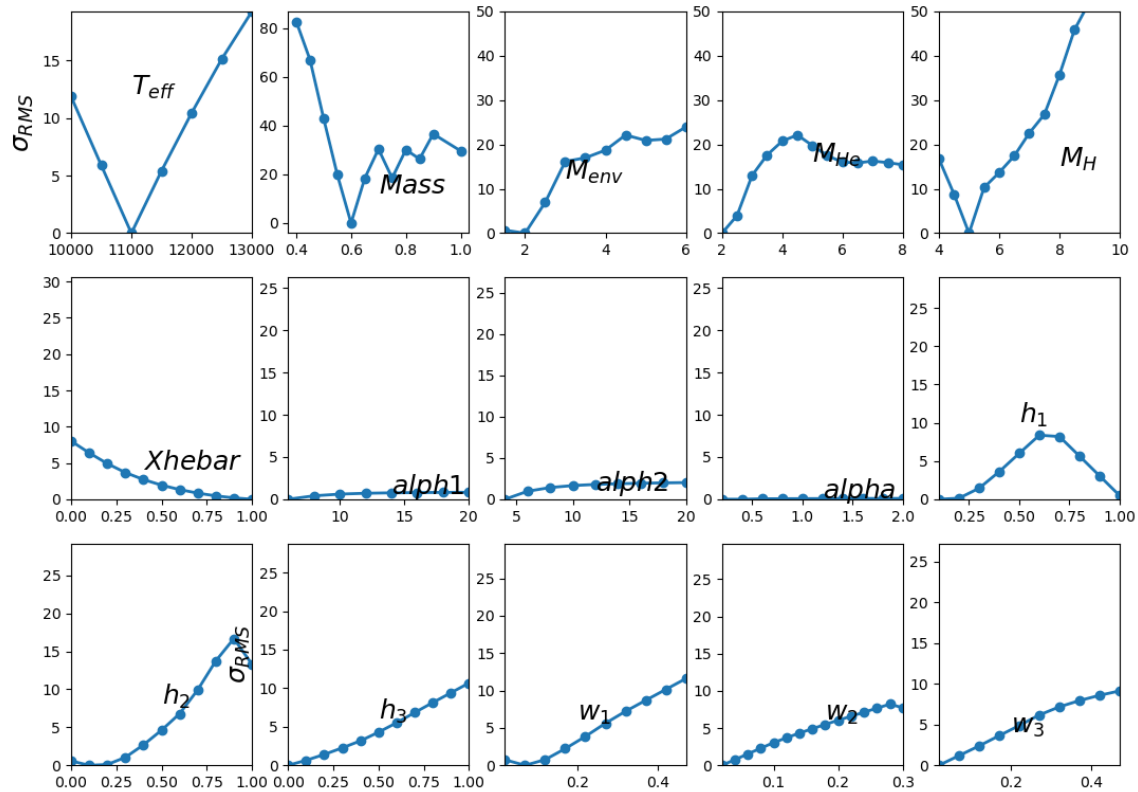
- At last count, 50 known DBVs and 500 DAVs
- In WD asteroseismology, we still lack a pipeline
- Pioneering work: Castanheira & Kepler, 2009
- Problems:
 - Parameterization that works for all
 - Mode identification (ell's and k's)
 - Uniqueness of solution

Parameterization

- Mass, effective temperature
- Envelope parameters
- Core parameters



Finding parameters that matter – Example R548



Results for 13 DAVs

Envelope

Core

	teff	mass	menv	mhe	mh	xhebar	alph1	alph2	alpha	h1	h2	h3	w1	w2	w3
BPM 30551	1	1	1	1	1	3	3	3	3	2	2	2	1	1	3
BPM 31594	1	1	1	1	1	3	3	3	3	3	2	2		3	3
EC 00497	1	1	1	1	1	3	3	3	3	3	3	1	1	3	3
EC 11266	1	1	3	1	1	3	3	3	3	3	1	3	3	3	3
EC 23487	1	1	2	1	1	3	3	3	3	1	1	2	1	1	2
HE 0532	1	1	1	2	2	2	3	3	3	3	1	3	2	1	2
HS 0507	1	1	2	2	2	3	3	3	3	2	2	2	2	3	3
HS 1013	1	1	1	1	1	3	3	3	3	3	1	2	3	3	2
J0925	1	1	1	1	1	3	3	3	3	2	3	3	2	2	3
L19-2	1	1	1	2	1	3	3	3	3	3	1	1	3	3	2
MCT 0145	1	1	1	1	1	3	3	3	3	3	2	2	1	1	1
R548	1	1	1	1	1	2	3	3	3	2	1	2	2	2	2
WD 0108	1	1	1	3	1	2	3	3	3	2	3	3	2	3	3

Takes too long to do it for each star!

- With this subset, explore if there is a correlation between the period spectrum and its sensitivity to a particular subset of parameters
- We expect that to be the case, though it's not simple (e.g. Bischoff-Kim A., 2017)
- If we can tell from the spectrum alone, which parameters matter the most, then that opens the way to improved pipeline fitting!

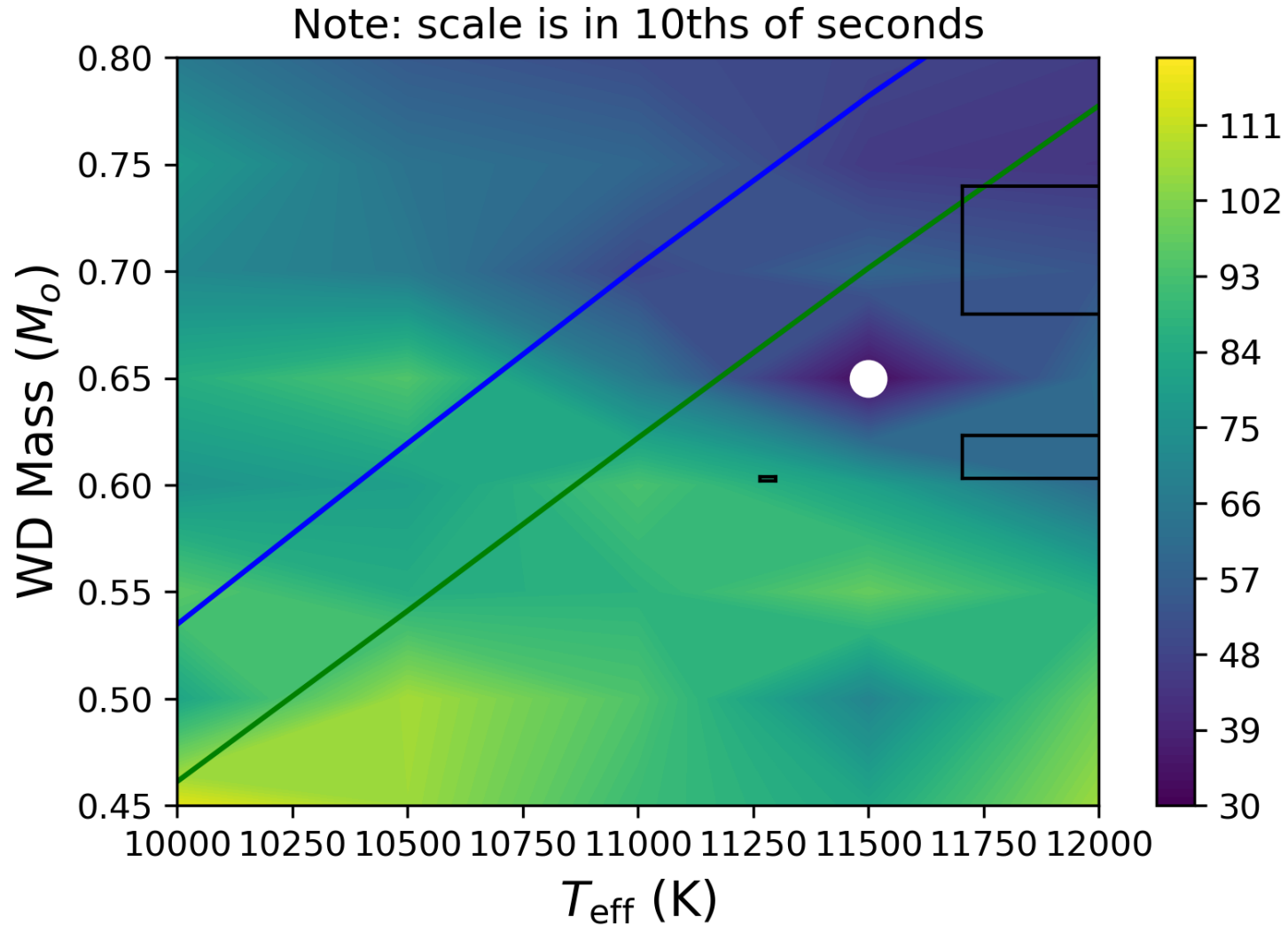
Choice of best fit models/ell identification

- Often, we get families of solutions
- We can narrow that down in the mass-effective temperature plane
- We've been using spectroscopy but that has its challenges
- We can improve on the constraints by folding in distances

The “Gaia lines”

- Use Gaia parallaxes, $\log g$, and a mass-radius relationship. Advantage: we don't need the effective temperature
- Carry the error bars in parallaxes and $\log g$
- Use WDEC to determine mass-radius relationship. The mass-radius relationship is temperature dependent, but for the rest, we use a fiducial model

Example - EC23487



Conclusions

- I presented a path to improve pipeline fitting of WD period spectra
- Gaia parallaxes are a key part of the process
- One missing link is a systematic mapping between what parameters matter most and the types of period spectra

References

- Bischoff-Kim A., 2017, EPJWC, 152, 06011.
doi:10.1051/epjconf/201715206011
- Castanheira B.~G., Kepler S.~O., 2009, MNRAS, 396, 1709.
doi:10.1111/j.1365-2966.2009.14855.x
- Gianninas A., Bergeron P., Ruiz M.~T., 2011, ApJ, 743, 138.
doi:10.1088/0004-637X/743/2/138
- Koester D., Napiwotzki R., Christlieb N., Drechsel H., Hagen H.-J., Heber U., Homeier D., et al., 2001, A&A, 378, 556. doi:10.1051/0004-6361:20011235
- Koester D., Voss B., Napiwotzki R., Christlieb N., Homeier D., Lisker T., Reimers D., et al., 2009, A&A, 505, 441. doi:10.1051/0004-6361/200912531